

Bonin (Ogasawara Islands)

Japan's far-away corner

29-05 until 06-06-2019



Legenda:

***AAAA** = New (Holarctic) Species **(7)**

AAAAA = Good species for the trip or for me (because not often seen)

The list order is conform the AOU checklist, with the recent changes on the splitting and lumping issue mainly based on publications in the "important magazines". Subspecies are only mentioned when thought to be important and visible in the field. The totals of birds per species are just a total of the birds I saw to give you an idea how many of a species you might encounter during a trip. Only species seen are mentioned and heard when no lifer.

On this trip, the weather was really good with no real wind on both crossings to the Ogasawara's. It was hot and humid on the islands.



Hahajima from the viewpoint near the little town.

Itinerary

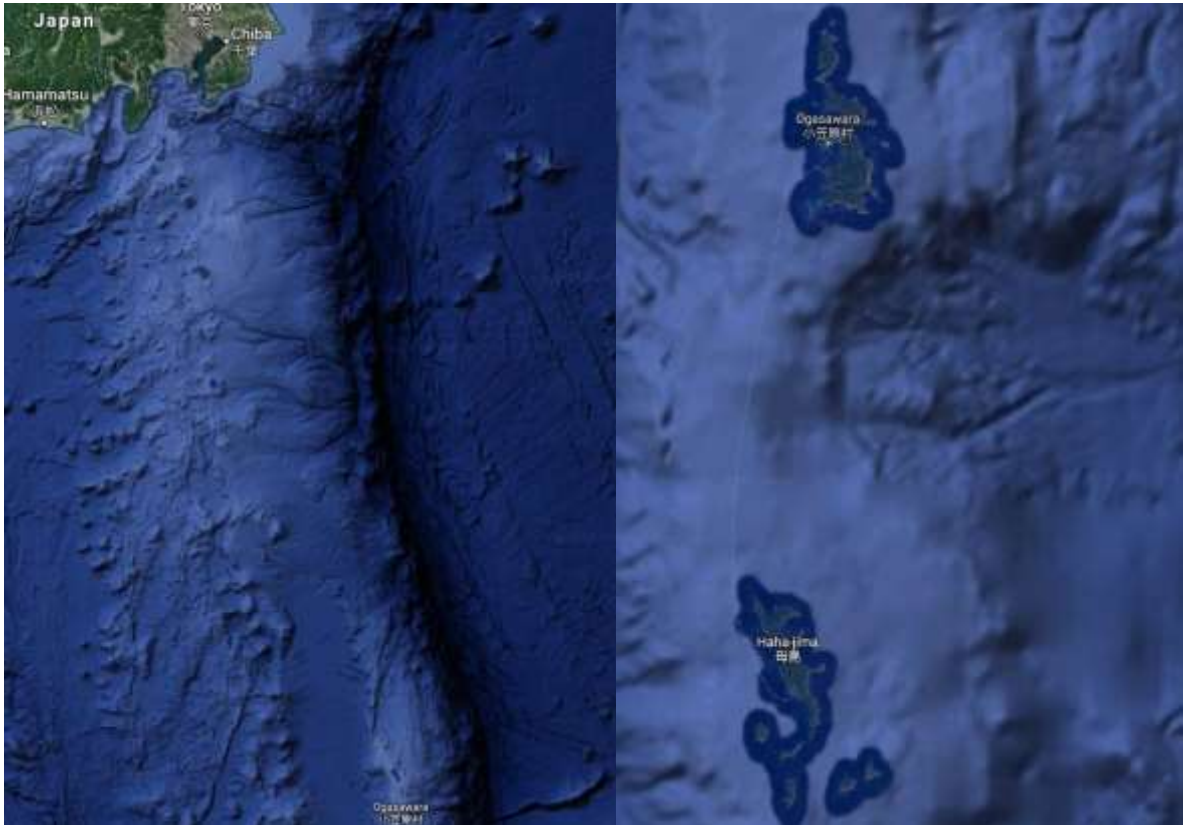
- 29-05** Flew from Amsterdam to Tokyo.
- 30-05** Arrived in Tokyo and "chilled out" in the city park, Hamarikyu Gardens.
- 31-05** Took the boat at 11.00 to the Ogasawara Islands and spent the night on the boat.
- 01-06** Arrived at Chichijima harbor at 11.00 and took the boat to Hahajima two hours later, to arrive around 16.00.
- 02-06** Birded on Hahajima and took the ferry back to Chichijima in the afternoon; slept in the Shanti Bungalow resort.
- 03-06** Birded on Chichijima and took a boat trip around the island.
- 04-06** Birded in the morning on Chichijima and took the ferry back to Tokyo at 14.00.
- 05-06** Arrived in Tokyo at 14.00 hour and spent the night there.
- 06-06** Flew back to Amsterdam.



Hahajima Island.



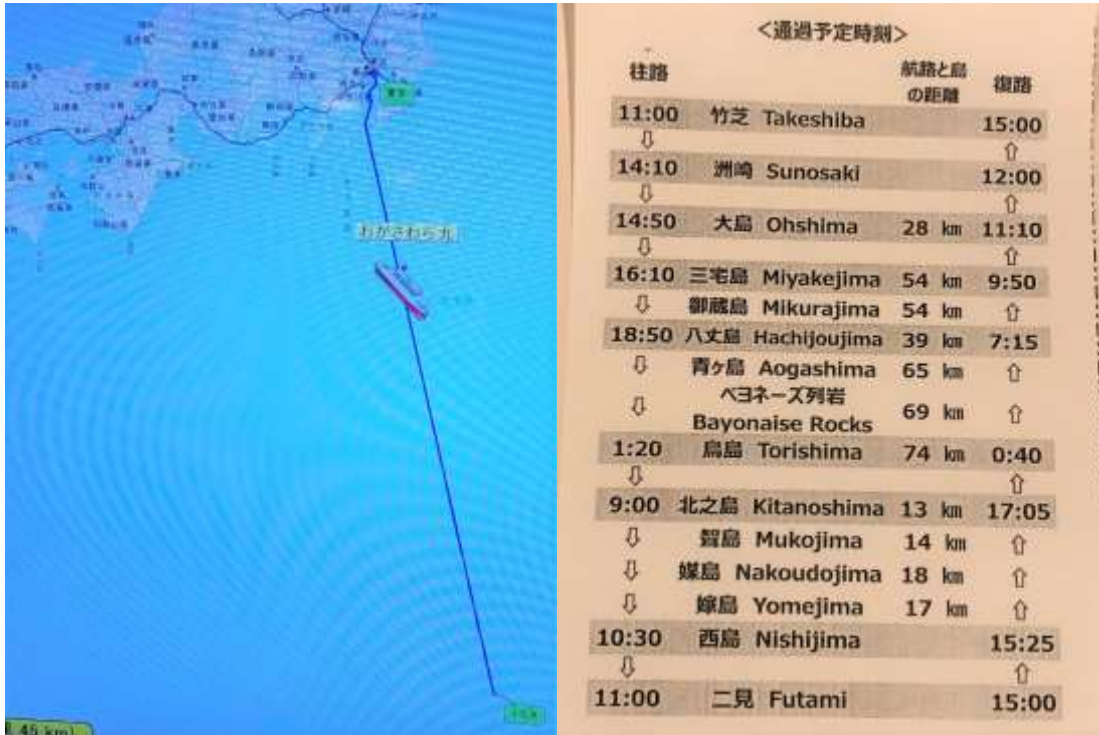
The sleeping place on the ferry.



Map of where the Ogasawara Islands are, and of the two main islands.



The Ogasawara maru in Haha-jima harbor.



The route taken as seen on the boat screen, and a timetable of the islands passed.

THE BIRD SPECIES

01. **Chinese Spot-billed Duck– *Anas zonorhyncha***

30-05 6 ex in the city park surroundings.

02. **Common Pochard - *Aythya ferina***

30-05 1 male in the city park surroundings.

03. **Black-footed Albatross – *Phoebastria nigripes***

A total of 3 birds seen on the crossings from and to Tokyo, the last bird gave quite good views.

04. ***BONIN PETREL – *Pterodroma hypoleuca***

About 600 birds seen together on both crossings. Most (almost all) birds were seen in the part of the trip closest to the Ogasawara's. Nice "classic" looking Petrel with an obvious dark (side) neck and a long dark underwing bar.

05. ***WHITE-NECKED PETREL – *Pterodroma cervicalis ssp: cervicalis***

01-06 1 ex. seen well following the boat for a while.

04-06 1 ex. seen very well in a flock of Bonin's. A quite big (compared to Bonin's) petrel, very white on the underparts with a small dark carpal bar and no long bar like Bonin's. Paler grey upperparts and a dark upper head. The white neck is not always easy to see at a distance.

06. **Streaked Shearwater – *Calonectris leucomelas***

Very common (2000+) during the part of the crossing closest to Tokyo. The "default" seabird on that part of the trip.

07. ***WEDGE-TAILED SHEARWATER – *Ardenna pacifica***

Very common (1500+) during the part of the ferry crossings closest to the Ogasawara's. No "dusky" "Wedgies" seen, all gray or pale-bellied birds. Obvious pale scaling on the upperparts.



Streaked Shearwater and Wedge-tailed Shearwater

08. **Short-tailed Shearwater – *Ardenna grisea***
 31-05 3 ex, seen well flying north, close to the ferry. Quite short billed and compact (excluding Sooty) with pale underwings.
09. ***BANNERMAN'S SHEARWATER – *Puffinus bannermani***
 02-06 5 ex. seen swimming in a small raft on the crossing between Hahajima and Chichijima. Small (size of the Bulwer's Petrel that flew over them) black and white shearwaters with the eye in the dark of the head.
 04-06 1 ex. seen near Yomeijima on the crossing back to Tokyo. A small, quite swiftly flying, black and white shearwater in a flock of Wedgies.
10. **Bulwer's Petrel - *Bulweria bulwerii***
 By far the most common "black (storm)petrel" of the trip. About 1500+ seen on both ferry crossings during most of the way.
11. **Leach's Storm-Petrel – *Hydrobates leucorhous* ssp: *leucorhous***
 04-06 10 ex. scattered along the ferry crossing back to Tokyo. Seen quite well with the white rump.
12. ***MATSUDAIRA'S STORM-PETREL – *Hydrobates matsudairae***
 A total of 36 seen, all during the part of the ferry crossing closest to the Ogasawara's. Great scope views of these all black (not chocolate brown) storm petrels, with a not so obvious paler upperwing band. The bird closest to me showed clearly the white primary flash. Quite deeply forked tails.
13. **Tristram's Storm-Petrel – *Hydrobates tristrami***
 04+05-06 A total of 21 seen, all but one (that bird was seen on the Ogasawara half of the crossing) near Miyakejima. Great to see and to compare them with Matsudaira's (though not seen together). Slightly smaller, more chocolate brown with a more noticeable upperwing band.
14. **Black-crowned Night-heron – *Nycticorax nycticorax***
 03-06 4 ex. seen and heard well in the upcoming dusk near the little stream at my hotel on Chichijima. Not mentioned to be on the island in "Birds of Japan" by Chikara.
15. **Grey Heron – *Ardea cinerea***
 Quite common in the harbor of Tokyo, also in several island colonies.
16. **Great-White Egret – *Ardea alba* ssp: *modesta***
 05-06 3 ex. in a colony of Grey Heron in the harbor area of Tokyo.
17. **Intermediate Egret – *Ardea intermedia***

02+03+04-06
a colony.

3 ex. present on Chichijima, one feeding on booby eggs in



18. **Pacific Reef Egret – *Egretta sacra***

31-05

4 ex. flying by the ferry in the Tokyo harbor area.

19. **Brown Booby – *Sula leucogaster* ssp: *plotus***

Common on the Ogasawara Islands in small colonies, also seen on the ferry trip during the part closest to the Ogasawara's.

20. **Great Cormorant – *Phalacrocorax carbo***

Quite common in the harbor of Tokyo, also in several big island colonies.

21. **Eurasian Kestrel – *Falco tinnunculus***

30-05

1 ex. seen in the park in Tokyo.

22. **Black-eared kite – *Milvus migrans* ssp: *lineatus***

31-05

10 ex. fishing along the shore of the harbor in Tokyo.

23. **Grey-faced Buzzard – *Butastur indicus***

04-06

1 ex. in flight, quite low over Chichijima, a migrant?

24. **Japanese Buzzard – *Buteo japonicus* ssp: *toyoshimai***

03+04-06

3 ex. seen on Chichijima, very pale birds.

25. **Pacific Golden Plover – *Pluvialis fulva***

03+04-06

7 ex. in total on two grassy places at Chichijima, one near the harbor and six on the soccer school field.



26. **Grey-tailed Tattler – *Tringa brevipes***
 02+03-05 1 ex seen and heard well in the little creek near the hotel.
27. **Ruddy Turnstone – *Arenaria interpres***
 04-06 7 ex. in the harbor of Chichijima.
28. **Black-tailed Gull – *Larus crassirostris***
 About 15 birds seen in the harbor area of Tokyo.
29. **Little Tern – *Sternula antillarum***
 31-05 3 ex. flying past the ferry.
30. **Sooty Tern – *Onychoprion fuscatus***
 02-06 5 ex. two near Hahajima and three near Chichijima. Saw the first birds really well, flying together in front of the ferry.
31. **Brown Noddy – *Anous Stolidus***
 A total of 30 seen mostly around Chichijima (a few near Hahajima) and during the part of the ferry crossing closest to the Ogasawara's.
32. ***(PACIFIC) BLACK NODDY – *Anous minutus ssp: marcusii***
 02-06 1 ex. seen (with a flock Brown Noddies) near Hahajima, on the ferry back to Chichijima. A much smaller black noddy, the size of a Bulwer's Petrel, slimmer than Brown.
33. **Arctic Skua – *Stercorarius parasiticus***
 05-06 1 ex. seen from the ferry, about halfway.
34. **Long-tailed Skua – *Stercorarius longicaudus***
 31-05 1 ex. a dark not adult bird past the ferry
 04-06 2 ex. "Wedgies" hunting together, also immature pale birds; spectacular to see them hunting.



Long-tailed Skua passing the ferry



and a flock of "Red-headed Woodpeckers."

35. **Japanese Wood pigeon – *Columba janthina ssp: nitens***
 01+02-06 14 ex, all on Hahajima near and around the village and harbor. A really easy to see bird there. The pink heads were variable.
 04-06 1 ex. flying over the harbor of Chichijima.
36. **Oriental Turtle Dove – *Streptopelia orientalis ssp: orientalis***
 30-05 4 ex. feeding at my feet in Hamarikyū Gardens.

37. **Large-billed Crow – *Corvus macrorhynchos* ssp: *japonensis***
Common in Tokyo.
38. **Great (Japanese) Tit – *Parus major* ssp: *minor***
Common in the Hamarikyu Gardens.
39. **Barn Swallow – *Hirundo rustica***
Common in and around Tokyo.
40. **Brown-eared Bulbul – *Hypsipetes amaurotis* ssp: *squamiceps***
Common on both Ogasawara Islands and not different from the “mainland” form.
41. **Japanese (Bonin) Bush warbler – *Cettia diphone* ssp: *diphone***
Common on both Ogasawara islands. Their song is very much the same as on the “mainland”.



The bush warbler

and the honeyeater, the later is the only real endemic.

42. ***BONIN HONEYEATER – *Apalopteron familiare* ssp: *hahasima***
01+02 About 40 birds seen on Hahajima. Easy to find (though less common than 43). Noisy.
43. **Japanese White-eye – *Zosterops japonicus***
30-05 4 ex. feeding at my feet in Hamarikyu Gardens.
Very common on both Ogasawara Islands but introduced there and a mix of two subspecies.
44. **White-cheeked Starling – *Spodiopsar cineraceus***
30-05 30 ex. feeding at my feet in Hamarikyu Gardens.
45. **White’s Thrush – *Zoothera aurea* ssp: *tortugumi***
01+02 4 ex. seen on Hahajima, nice views perched and in flight,
two feeding young near a nest.
46. **(Eastern) Blue Rock Trush – *Monticola solitarius* ssp: *philippensis***
Common on both Ogasawara Islands.



47. **Eurasian tree Sparrow – *Passer montanus***
30-05 Common in Hamarikyu Gardens.
- **Bonin Flying Fox – *Pteropus pselaphon*** – 10 seen on Hahajima, spectacular animal, big!