

# UGANDA

27th January - 13th February 2023



*Shoebill (Balaeniceps rex) at Mabamba swamps (mobile docu Photo: BR).*

Notes on birds by

**Birthe Rasmussen**

**&**

**Erik Vikkelsø Rasmussen**

## **Introduction**

Uganda gained their independence from UK in 1962 and became a republic. After the end of the Idi Amin regime president Yoweri Museveni took over in 1986 and since then Uganda has been one of the safest countries to visit in Africa with stability in the recent many years. Uganda is known as the “the pearl of Africa” and Uganda absolutely lives up to its reputation. In addition to the beautiful wildlife the country has a lot to offer birdwatchers too. Especially the Albertine Rift montane forest in East-Central Africa has a lot of bird species which a very difficult to find at other places.

This report deals with a journey to South-Western Uganda for 18 days by 10 Danish birdwatchers between the 27<sup>th</sup> January and the 13<sup>th</sup> February 2023. Many of us have been in Africa several times before and on this trip the goal was to pick up as many as possible of the difficult species in the Albertine Rift area and besides that to see Shoebill, Mountain Gorilla and Chimpanzee.

The participants on this trip was Christian Leth, Mikkel Leth, Erik Groth-Andersen, Tina Elley, Mads Elley, Christian Glahder, Henrik Thorhaug Rask, Lars Ejlersen, Birthe Rasmussen and Erik Vikkelsø Rasmussen.

This trip to Uganda was organized by Cul Tours and Safaris, University Plaza, Bombo Road Office Suite C-06, Kampala, Uganda (<https://www.cultoursandsafaris.com>) and as Tina and Mads has used some years ago with good experiences.

The route we followed was the same as many other visitors in Uganda earlier used. The trails, locations, tracks is well described and reviewed in many different report´s ([www.cloudbirders.com](http://www.cloudbirders.com)) to which we refer.

The birding was excellent throughout the entire trip and no less than 420 species were seen. In addition, it were seen approximately 15+ species more, not by us but by the other participants. These observations is not included in this report. For identification we used Field Guide to the Birds of East Africa by T. Stevenson and J. Fanshawe (2002). Also the many mammal species was surprisingly large – not only for Mountain Gorillas and Chimpanzees but also more Leopards, Spotted Hyena, Lions and others was a great experience. We used The Kingdon Field Guide to African Mammals by J. Kingdon (1997) for identification.

We can absolutely recommend a trip to Uganda with its wonderful, smiling and friendly people everywhere and the amazing nature. Visit Uganda – and support and pay with a big smile for the Gorilla´s survival!

Contact address:

Birthe Rasmussen and Erik Vikkelsø Rasmussen  
Tværvej 6 A, st.th.  
DK-4500 Nykøbing Sjælland, Denmark  
[vikkelso@post.tele.dk](mailto:vikkelso@post.tele.dk).

## **Itinerary**

Friday 27<sup>th</sup> January: We fly at 6.00 from Copenhagen with KLM and via Amsterdam Schiphol airport and a short stop in Kigali, Rwanda, we arrived at Entebbe airport 23.45, Uganda. In the airport we were picked up by Steven from Cul Tours and Safaris for night transfer to our hotel Gately Inn near Entebbe.

Saturday 28<sup>th</sup> January: After breakfast we drove to Entebbe Botanical Garden for birding. Here we saw African Hobby, African Green Pigeon, Grey Parrot among other good things. After a nice lunch close we went on our birding and saw Bathawk at day roost, Roos Turaco and Southern White-faced Scops Owl.

Sunday 29<sup>th</sup> January: Early up and all day at Mabira forest including good birds as Black-billed Turaco, Ross´s Turaco, Shining-blue Kingfisher and Western Nicator.

Monday 30<sup>th</sup> January: This was the first big day. The day where we paddled in canoes looking for the target nr 1 on this trip – the mighty Shoebill. We arrived very early at Mabamba wetlands. The most of the morning and before dinner we paddled around and saw at least 4 Shoebills and very close to our canoes. Other good birds were Goliath Heron, Allens Gallinule, Lesser Jacana, Red-headed Lovebird, Blue-breasted Bee-eater, Blue Swallow and other good birds. After a late lunch we drove for the next lodge – Rwakobo Rock Lodge.



*Mabamba swamps (all photos: EVR).*

Tuesday 31<sup>st</sup> January: After an early breakfast we drove to Lake Mburo. We had a morning boat trip with focus on African Finfoot, Papyrus Gonolek and Greater Swamp Warbler as well. We saw them all and many other birds including White-winged Warbler and White-winged Tit. After a late lunch we drove for afternoon game drive nearby and saw a lot of Zebras, Topis, Giraffe, Elands, a Leopard for long time etc and a beautiful Verreaux's Eagle. Before dinner we had roosting Black-shouldered Nightjar and Freckled Nightjar at the bungalows at Rwakobo lodge.

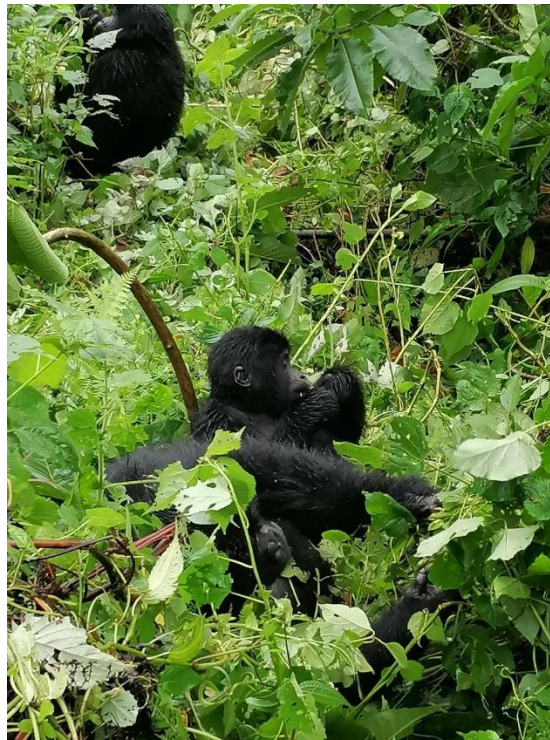




*Zebras, Lake Mburo (Photo: EVR).*

Wednesday 1<sup>st</sup> February: After an early morning breakfast we birded our way out and proceeded to Ruhija and against Bwindi. We stopped many times for birding and found among others Western Banded Snake-eagle, Handsome Francolin, Great Blue Turaco, Archers Robin-chat and White-tailed Blue-Flycatcher. We arrived late at Bwindi.

Thursday 2<sup>nd</sup> February: This morning was the next important day – Mountain Gorilla-day! We have all looked forward to this day and in the morning it was very good weather with no rain. I had to change significantly later. The first two hours we saw dancing woman, found our group because there were many groups this morning with “Gorilla-lovers”, make deals with the armed personal, guide and people who could help us against the rainforest and take care of our luggage. When we started our expedition to the gorilla family a great thunderstorm was coming up and culminated with an heavy cloudburst and all got totally soaked. Terrible – and people was freezing. After two hours waiting drenched in the forest – we could finally walk against the rainforest to the beloved Gorillas. After some time we landed in a flock of 18 Gorilla’s close up inclusive a great Silverback. We got two hours together with them close up. Here is two of them:



*Above: Mountain Gorilla female with a young, Bwindi (mobile Photo: BR), below: Sony 50 mm (photo: EVR).*





*The Mountain gorilla-group on the 2<sup>nd</sup> February – from left: a spotter, our female guide Hadijah, Birthe, the leader, Lars Ejlersen, Erik Groth-Andersen, armed ranger, Erik, armed ranger, Mikkel Leth, Steven and on knees in front Christian Glahder, Christian Leth and Henrik Thorhauge Rask.*

Friday 3<sup>rd</sup> February: Early up and full day birding in the Bwindi rainforests. The weather situation was much better this morning and we saw a lot of birds including Black-billed Turaco, Narina Trogon, Bar-tailed

Trogon, Cassin's Honeyguide, Equatorial Akalat, Rwenzori Batis, Purple-Breasted Sunbird, Waller's Starling among others.

Saturday 4<sup>th</sup> February: Leaving Bwindi to Buhoma area via the Neck. We stopped and used the most of the day in this area with beautiful rainforest and this area gave us Barred Long-tailed Cuckoo, Black Bee-eater, Black Saw-Wing, Petit's Cuckoo-Shrike, Collared Apalis, Dusky-Blue Flycatcher, Bronze Sunbird, Many-collared Bush-Shrike, Sharpes Starling, Dusky Twinspot and many more. Checked in at our new lodge – Buhoma Community Homestay (Ride for a woman) late.

Sunday 5<sup>th</sup> February: After an early breakfast we started birding at this lower side of Bwindi and Buhoma area in search for special birds. During the day in good forest we found Black Bee-Eater, White-Headed Wood-Hoopoe, Willcocks Honeyguide, African Broadbill, Cameron Sombre Greenbul, Fire-Crested Alethe, White-Tailed Ant-Thrush, Scaly-Breasted Illadopsis and Lüdhers Bush-Shrike.

Monday 6<sup>th</sup> February: After an early breakfast we leaved Buhoma for the next destination the famous Queen Elisabeth National Park where we should stay two days at Buffalo Lodge. This park is the second biggest protected area in Uganda. Game drive all day including Leopard for a long time resting in a tree to great delight for the safari cars and two Lions, Spotted Hyena as well. Many birds all day including many African White-backed Vultures, Lappet-Faced Vulture, Wahlbergs Eagle, Black-Bellied Bustard, Nubian Woodpecker, Black-Lored Babbler, Slate-Collared Boubou, Black-Chinned Quailfinch among others.



Tuesday 7<sup>th</sup> February: Game drive all day in Queen Elisabeth National park including an exciting boat cruise on Kazinga Channel and Lake Edward with many mammals. The boat cruise included many African Elephants, hippotamus, buffalos etc – and many birds including Yellow-Billed Stork, Martial Eagle, Temmincks Courser, Three-Banded Plover, Caspian Plover, African Snipe, Red-Throated Bee-Eater, Papyrus Conolek as well.

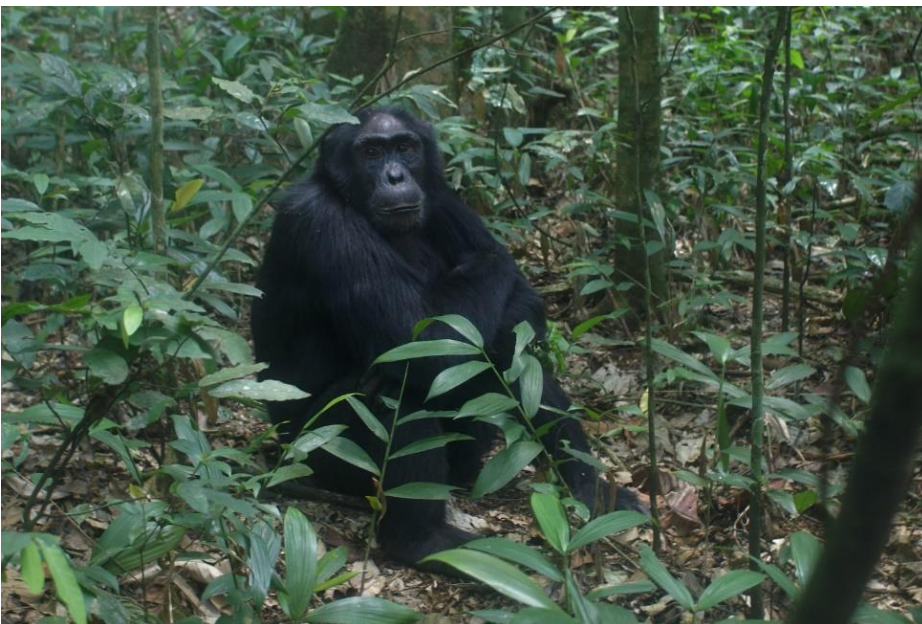


Wednesday 8<sup>th</sup> February: Early up and we leaved Queen Elisabeth for a long drive against Kibale Forest national park, and we checked in late at Kibale Forest Lodge. A lot of stops this day and we saw among others Brown Snake-Eagle, White-Spotted Flufftail, African Pygmy Kingfisher, Yellow-crested Woodpecker, Western Nicator, Cassin´s Grey Flycatcher, Collared Sunbird and Red-Headed Bluebill.



*Photos from Queen Elisabeth National Park, Sony 50 mm (Photos: EVR).*

Thursday 9<sup>th</sup> February: This morning was the third most important day on this trip – Chimpanzee-day! Early up as usual and walking on the trail before light and sunrise – of course. First our female ranger and guide this morning ordered – Pitta first – Chimpanzee next! I don´t have to be clever how they find pittas in Africa, but in South-East Asia where we have seen many Pitta species it is always about – go slow, look and listening for leaves turning on the forest floor and take your time, then you will find the pitta´s on the ground. But not in Kibale where we had to form a chain against the rainforest so we could flush up the pitta. In my opinion it is very wrong – you will only see a flushed Pitta – and not a beautiful one jumping around on the forest floor. Well, we had 3 Green-Breasted Pitta´s. Next, Chimpanzee´s. After one hour trekking in the rainforest we arrived at the Chimpanzee place, and we hoped for that we was the only group in this area. NO, we were not the only group – I can´t say how many people there was here – but we saw Chimpanzee´s very close. Here is one of them:



*Chimpanzee - Is there anyone in doubt were we come from? – our immediate family – my cousin (Photo: EVR).*

Friday 10<sup>th</sup> February: Up very early as usual, breakfast, and then a long drive for hours to reach Semliki National Park. Semliki forest is a very important place to be because it is a part of Albertine Rift montane forests in ecoregion of East-Central Africa along the DR Congo border. Albertine Rift is home to distinct Afromontane forests with very high biodiversity and include many good and difficult bird species. We birded the most of the day in this area and saw a lot, but not all, good birds. This include Yellow-Throated Cuckoo, Piping Hornbill, Red-Billed Dwarf Hornbill, Black-Casqued Hornbill, Yellow-Throated Nicator, Toro Olive Greenbul, Xaviers Greenbul, Forest Robin, Grey-Winged Robin-Chat, Buff-Throated Apalis, Green-Headed Sunbird, Crested Malimbe among others.

Saturday 11<sup>th</sup> February: This morning we drove back from Kibale Forest lodge to our lodge near Entebbe airport where we arrived late afternoon before dark. After dinner Christian and Mikkel left for the flight back home to Denmark.

Sunday 12<sup>th</sup> February: The remaining eight participants used the day in Entebbe Botanical Garden before our flight home. We flew on time 23.50 with KLM via Amsterdam to Copenhagen

Monday 13<sup>th</sup> February: where we landed 9.05 on time. End of tour.

### Accommodation

Gately Inn Entebbe: (<https://gatelyinn.com/>) ([stay@gatelyinn.com](mailto:stay@gatelyinn.com)). It is a little fine tourist hotel near Kampala and Entebbe airport. Good rooms and with an outside restaurant and with a good atmosphere. Shower: Hot water. Cold beers. Accept Master- and Visa cards. Wi-Fi.

Rwakobo Rock lodge near Lake Mburo National park: (<https://www.rwakoborock.com/>) ([info@rwakoborock.com](mailto:info@rwakoborock.com)). This is a fantastic place to be including great view. Fine cabins next to the main building and restaurant. Shower: hot water. Cold beers. Wi-Fi.





Trekkers Tavern, Bwindi: (<https://trekkerstavern.com/>). A good choice for the gorilla trips. Nice rooms and restaurant. Free Wi-Fi, cold beers.

Buhoma Community Homestay - Ride 4 a woman, Buhoma: (<https://www.ride4awoman.org/stay-with-us>) ([ride4awoman@gmail.com](mailto:ride4awoman@gmail.com)). Ride for a woman was set up in 2009 and the organization exist to support local woman. Here is a shop and a sewing room. Good atmosphere and a nice place to be. Cold beers and Wi-Fi.



*Everything was soaked after the gorilla trekking ☺ (Photo: EVR).*

Buffalo Lodge, Queen Elisabeth national park: (<https://www.buffalolodge.ug/>) ([bookings@savannahlodges.com](mailto:bookings@savannahlodges.com)). Very fine hotel next to the national park, exceptionally fine rooms, good restaurant, cold beers. We can recommend this hotel for everybody.

Kibale Forest lodge, Kibale: ([https://kibale-forest-lodge.business.site/?utm\\_source=gmb&utm\\_medium=referral](https://kibale-forest-lodge.business.site/?utm_source=gmb&utm_medium=referral)). The place to be if you want to go for chimpanzee trekking.



*From left: Steven (the owner of Cul Tours and Safaris) and Fred (our bird guide many days) (Photo: EVR).*

## Getting around, roads, traffic, health and safety

We felt very safe during the entire trip. The people were friendly and smiling everywhere and all people speaks the English language. The main roads are of good standard and normally in good shape. We were vaccinated against cholera, typhus, polio, Corona-Corvid 19 virus, pneumonia and influenza before we left Denmark. Tetanus and Hepatitis A is a must of course. We used antimalarial pills daily and we took the Malarone pills.

## Guides

As mentioned above our vacation was organized by Cul Tours and Safaris ([www.cultoursandsafaris.com](http://www.cultoursandsafaris.com)). Mail: ([info@cultoursandsafaris.com](mailto:info@cultoursandsafaris.com)). The owner, Stephen Bukoma Wanambwa, was also our guide. We did the trip in his safari cars and he used different bird guides. His friend, Fred, was our guide on the whole trip. We can recommend this company for your trip to Uganda. Fred was a very good guide in his own local locations but in Albertine Rift he might well have been somewhat better to pick up the difficult endemics.

## Micellaneous

ATM: We found and used ATM's in different towns – small and large and it gave us no problems at all. Everything worked fine.

Trip reports: We read some of the recent reports ([www.cloudbirders.com](http://www.cloudbirders.com)) for preparation.

Cost of the trip: The total for each of us was approximately Euro 4.000,00 for 18 days inclusive international flights, 4wD tour bus, accommodation, full board included, different guides daily. Gorilla and Chimps permits are also included (Gorillas USD 700 for each person and Chimps USD 200). It is up to yourself how much you will use for tips to the different guides, spotters and armed rangers to protect you. We used Euro 400 on this vacation.

## Systematic

Systematics follow Stevenson & Fanshawe (2002): Field Guide to the Birds of East Africa, London. The Albertine Rift endemics are specified with an \* in this report (Uganda, DR Congo and Rwanda).

## Birds

### GREAT WHITE PELICAN (*Pelecanus onocrotalus*)

7/2 1 Lake Edward.

### PINK-BACKED PELICAN (*Pelecanus rufescens*)

28/1 35+ Entebbe Botanical Garden and 7/2 12 Lake Edward.

### LITTLE GREBE (*Tachybaptus ruficollis*)

11/2 1 between Semliki and Entebbe.

### GREAT CORMORANT (*Phalacrocorax carbo*)

7/2 100+ Queen Elisabeth National Park.

### LONG-TAILED CORMORANT (*Phalacrocorax africanus*)

28/1 10+ Entebbe Botanical Garden, 29/1 10+ Mabira Swamps, 30/1 15+ between Mabira and Rwakobo lodge, 31/1 1 Mburo lake, 1/2 2 between Mburo and Bwindi, 7/2 25+ Lake Edward, 8/2 2 Kibale, 10/2 3 Semliki, 11/2 2 between Semliki and Entebbe.

### AFRICAN FINFOOT (*Podica senegalensis*)

31/1 4 Mburo lake and all seen properly and incredible well close to our boat.



BLACK-CROWNED NIGHT-HERON (*Nycticorax nycticorax*)

31/1 1 Mburo lake.

CATTLE EGRET (*Bubulcus ibis*)

A very common bird most places and we counted 950+ birds but not everyone have been counted.

COMMON SQUACCO HERON (*Ardeola ralloides*)

30/1 15+ Mabamba swamps and 7/2 10+ Lake Edward and Queen Elisabeth National park.

STRIATED HERON (*Butoides striatus*)

29/1 1 Mabira forest, 31/1 3 Mburo lake, 7/2 1 Queen Elisabeth National park.

LITTLE EGRET (*Egretta garzetta*)

28/1 5 Entebbe Botanical garden, 29/1 2 Mabira forest, 30/1 1 Mabamba swamps and 1 between Mabamba and Rwakobo lodge, 31/1 1 Mburo lake, 7/2 10+ Queen Elisabeth National park and Lake Edward.

INTERMEDIATE EGRET (*Mesophoyx intermedia*)

30/1 1 Mburo lake.

GREAT EGRET (*Ardea alba*)

28/1 1 Entebbe Botanical garden, 29/1 3 Mabira forest, 30/1 5 Mabamba swamps and 5 between Mabamba and Rwakobo lodge, 31/1 3 Mburo lake, 1/2 2 between Mburo and Bwindi, 7/2 2 Lake Edward and 8/2 1 between Queen Elisabeth National park and Kibale.

GOLIATH HERON (*Ardea goliath*)

30/1 Mabamba swamps, 31/1 1 Mburo lake and 7/2 1 Lake Edward.

PURPLE HERON (*Ardea purpurea*)

30/1 20+ Mabamba swamps.

GREY HERON (*Ardea cinerea*)

Only few birds and 10 counted and most of them in Mabamba swamps.

BLACK-HEADED HERON (*Ardea melanocephala*)

30/1 5 Mabamba swamps and 10 between Mabamba and Rwakobo lodge, 1/2 5 Mburo lake, 6/2 5+ Queen Elisabeth National park, 7/2 2 Queen Elisabeth National park, 8/2 2 Lake Edward and 8/2 2 Kibale, 11/2 25+ between Semliki and Entebbe, 12/2 1 Entebbe Botanical garden.

HAMERKOP (*Scopus umbretta*)

Fairly common and we counted 31 birds with most around Lake Edward.

YELLOW-BILLED STORK (*Mycteria ibis*)

30/1 2 Mabamba swamps and 4 between Mabamba and Rwakobo lodge, 7/2 2 Lake Edward.



*Yellow-Billed Stork (Photo: EVR).*

ABDIMS STORK (*Ciconia abdimii*)

31/1 250+ roosting together in few big trees Mbuero lake, 8/2 25+ Queen Elisabeth National park.

WOOLLY-NECKED STORK (*Ciconia episcopus*)

30/1 6 Mabamba swamps, 6/2 2 Queen Elisabeth National park, 8/2 2 between Queen Elisabeth National park and Kibale.

AFRICAN OPEN-BILLED STORK (*Anastomus lamelligerus*)

We found this species common and fairly widespread with most birds at Mabira, Mabamba swamps and Mbuero lake and we counted at least 190 birds.

MARABOU STORK (*Leptoptilos crumeniferus*)

Widespread and we counted 225 birds but not every bird has been counted.

SHOEBILL (*Balaniceps rex*)

30/1 4 seen well and properly Mabamba swamps. The mighty Shoebill was target species number ONE on this trip for all of us. We saw some of the birds for very long time and close up.

The guide told us that there were four breeding pairs in Mabamba this season. The Shoebill is vulnerable with a population about 3.000-5.300 individuals remaining in the wild but the population is unfortunately decreasing (BirdLife, Datazone).





*Shoebill, Mabamba swamps, Sony 50 mm (Photo: EVR).*

SACRED IBIS (*Threskiornis aethiopicus*)

30/1 5 between Mabamba and Rwakobo lodge, 31/1 2 Mburo lake, 1/2 4 Mburo lake, 7/2 3 Lake Edward.

HADADA IBIS (*Bostrychia hagedash*)

A very common and noisy bird with a total of 74 counted birds. Not every bird counted.

EGYPTIAN GOOSE (*Alopochen aegyptiacus*)

28/1 10+ Entebbe Botanical garden, 31/1 1 Mburo lake, 7/2 25+ Queen Elisabeth National park and Lake Edward, 8/2 1 Queen Elisabeth National park and 1 between the park and Kibale, 12/2 4 Entebbe Botanical garden.

SPUR-WINGED GOOSE (*Plectropterus gambensis*)

31/1 1 Mburo lake.

KNOB-BILLED DUCK (*Sarkidiornis melanotos*)

30/1 1 Rwakobo lodge.

WHITE-FACED WHISTLING-DUCK (*Dendrocygna viduata*)

30/1 5 Mabamba swamps, 1/2 10 between Mburo and Bwindi.

RED-BILLED TEAL (*Anas erythrorhyncha*)

30/1 30+ Mabamba swamps.

YELLOW-BILLED DUCK (*Anas undulata*)

28/1 Entebbe Botanical garden, 30/1 15+ Mabamba swamps.

YELLOW-BILLED KITE (*Milvus aegyptius*)

A quite common species seen almost everywhere but normally in small numbers. We counted at least 125+ birds.

BLACK-SHOULDERED KITE (*Elanus caeruleus*)

29/1 1 Mabira forest, 30/1 3 between Mabamba and Rwakobo lodge, 6/2 3, 7/2 4 and 8/2 1 Queen Elisabeth National park.

AFRICAN FISH EAGLE (*Haliaeetus vocifer*)

28/1 10+ Entebbe Botanical garden, 31/1 20+ Mburo lake, 7/2 4 and 8/2 2 Queen Elisabeth National park, 7/2 10+ Lake Edward, 12/2 1 Entebbe Botanical garden.

PALM-NUT VULTURE (*Gypohierax angolensis*)

Seen on most locations and 20+ birds counted. More birds in Queen Elisabeth National park.

OSPREY (*Pandion haliaetus*)

30/1 1 Mabamba swamps, 6/2 1 and 7/2 1 Lake Edward.

HOODED VULTURE (*Necrosyrtes monachus*)

28/1 3 Entebbe Botanical garden, 29/1 2 Mabira forest, 12/2 3 Entebbe Botanical garden.

WHITE-HEADED VULTURE (*Trionoceph occipitalis*)

6/2 2 and 7/2 2 Queen Elisabeth National park.

AFRICAN WHITE-BACKED VULTURE (*Gyps africanus*)

We found this species common and fairly widespread with most birds in Queen Elisabeth National park. We counted 155 birds and 6/2 115+ in one group at day roost.

RÜPPELL'S GRIFFON VULTURE (*Gyps rueppellii*)

6/2 10+ and 7/2 4 Queen Elisabeth National park.

LAPPET-FACED VULTURE (*Torgos tracheliotus*)

31/1 1 Mburo lake, 6/2 1 and 7/2 2 Queen Elisabeth National park.

BROWN SNAKE-EAGLE (*Circaetus cinereus*)

6/2 1, 7/2 1 and 8/2 1 Queen Elisabeth National park.

WESTERN BANDED SNAKE-EAGLE (*Circaetus cinerascens*)

31/1 5+ Mburo lake, 1/2 1 Mburo and 1 between Mburo and Bwindi, 6/2 1 and 7/2 2 Queen Elisabeth National park.

AFRICAN MARSH HARRIER (*Circus ranivorus*)

30/1 5+ Mabamba swamps and 2 between Mabamba and Rwakobo lodge, 31/1 2 Mburo lake.

EURASIAN MARSH HARRIER (*Circus aeruginosus*)

30/1 2 Mabamba swamps, 7/2 1 Lake Edward.

DARK CHANTING-GOSHAWK (*Melierax metabates*)

12/2 1 Entebbe Botanical Garden.

GABAR GOSHAWK (*Micronisus gabar*)

31/1 1 Mburo lake.

LIZARD BUZZARD (*Kaupifalco monogrammicus*)

28/1 3 Entebbe Botanical garden, 29/1 1 Mabira forest, 12/2 2 Entebbe Botanical garden.



SHIKRA (*Accipiter badius*)

29/1 1 Mabira forest, 30/1 2 between Mabamba and Rwakobo lodge, 11/2 1 between Semliki and Entebbe, 12/2 1 Entebbe Botanical garden.

AFRICAN GOSHAWK (*Accipiter tachiro*)

4/2 1 Bwindi, 10/2 1 Semliki.

BAT HAWK (*Macheiramphus alcinus*)

28/1 1 at day roost outside Entebbe Botanical garden. Our guides know the place where we could find one at a local house quarter nearby the botanical garden. It was sitting in a tree for long time and we could enjoy the bird in our telescopes. It was one of the target species for many of us on this trip.

AFRICAN HARRIER-HAWK (*Polyboroides typus*)

28/1 2 Entebbe Botanical garden, 29/1 1 Mabira forest, 30/1 1 Mabamba swamps and 1 between Mabamba and Rwakobo lodge, 4/2 1 Bwindi, 6/2 1 Queen Elisabeth National park, 12/2 1 Entebbe Botanical garden.

AUGUR BUZZARD (*Buteo augur*)

31/1 1 Mburo lake, 1/2 3 between Mburo and Bwindi, 2/2 2 Ruhija.

MOUNTAIN BUZZARD (*Buteo oreophilus*)

1/2 2 between Mburo and Bwindi, 3/2 1 Ruhija.

COMMON BUZZARD (*Buteo buteo*)

28/1 1 Entebbe Botanical garden, 30/1 1 between Mabamba and Rwakobo lodge, 31/1 2 Mburo lake, 1/2 4 between Mburo and Bwindi, 7/2 1 and 8/2 2 Queen Elisabeth National park, 10/2 2 Semliki and 12/2 1 Entebbe Botanical garden.

TAWNY EAGLE (*Aquila rapax*)

6/2 1 Queen Elisabeth National park.

STEPPE EAGLE (*Aquila nipalensis*)

31/1 1 imm Mburo.

WAHLBERG'S EAGLE (*Aquila wahlbergi*)

6/2 3 and 7/4 4 Queen Elisabeth National park, 8/2 1 Kibale.

AFRICAN HAWK-EAGLE (*Hieraaetus spilogaster*)

7/2 2 and 8/2 1 Queen Elisabeth National park, 8/2 1 Kibale, 10/2 1 Semliki.

AYRES'S HAWK-EAGLE (*Hieraaetus ayresii*)

10/2 1 and 11/2 1 Semliki.

CASSIN'S HAWK-EAGLE (*Spizaetus africanus*)

1/2 1 between Mburo and Bwindi, 10/2 1 Semliki.

BATELEUR (*Terathopius ecaudatus*)

31/1 2 Mburo lake, 6/2 4 and 7/2 5 Queen Elisabeth National park.

LONG-CRESTED EAGLE (*Lophaetus occipitalis*)

30/1 1 Mabamba swamps, 1/2 6 between Mburo and Bwindi, 6/2 6 and 7/2 2 Queen Elisabeth National park, 8/2 1 between Queen Elisabeth national park and Kibale, 11/2 7 between Semliki and Entebbe.

MARTIAL EAGLE (*Polemaetus bellicosus*)

7/2 1 Queen Elisabeth National park.

AFRICAN CROWNED EAGLE (*Stephanoaetus coronatus*)

29/1 2 Mabira forest.

COMMON KESTREL (*Falco tinnunculus*)

28/1 1 Entebbe Botanical garden, 29/1 1 Mabira forest.

GREY KESTREL (*Falco ardosiaceus*)

31/1 2 Mburo lake, 1/2 1 between Mburo and Bwindi, 6/2 1 and 8/2 1 Queen Elisabeth National park.

AFRICAN HOBBY (*Falco cuvieri*)

28/1 1 Entebbe Botanical garden, 6/2 1 and 7/2 1 Queen Elisabeth National park, 12/2 1 Entebbe Botanical garden.

EURASIAN HOBBY (*Falco Subbuteo*)

28/1 1 Entebbe Botanical garden, 6/2 1 and 7/2 1 Queen Elisabeth National park, 12/2 1 Entebbe Botanical garden.

HELMETED GUINEAFOWL (*Numida meleagris*)

30/1 4 Mabamba swamps, 31/1 2 Mburo, 1/2 10 between Mburo and Bwindi, 6/2 2, 7/2 10 and 8/2 4 Queen Elisabeth National park, 8/2 2 Kibale.

SCALY FRANCOLIN (*Francolinus squamatus*)

6/2 2 Queen Elisabeth National park.

HANDSOME FRANCOLIN (*Francolinus nobilis*) \*

1/2 2 Bwindi.

CRESTED FRANCOLIN (*Francolinus sephaena*)

30/1 1 and 31/1 1 Mburo, 1/2 1 between Mburo and Bwindi, 6/2 3 Queen Elisabeth National park.

RED-NECKED SPURFOWL (*Francolinus afer*)

The most common francolin on the trip and we counted 91 birds with most francolins at Queen Elisabeth National park.

HARLEQUIN QUAIL (*Coturnix delegorguei*)

6/2 2 Queen Elisabeth National park.

COMMON QUAIL (*Coturnix coturnix*)

30/1 1 heard only Rwakobo lodge.

WHITE-SPOTTED FLUFFTAIL (*Sarothura pulchra*)

8/2 4+ Kibale swamp.

BLACK CRAKE (*Amaurornis flavirostris*)

30/1 3 Mabamba swamps, 31/1 1 Mburo, 1/2 3 between Mburo and Bwindi, 7/2 2 Lake Edward, 8/2 4 Queen Elisabeth National park.

AFRICAN SWAMPHEN (*Porphyrio madagascariensis*)

30/1 15+ Mabamba swamps.

ALLEN'S GALLINULE (*Porphyrio alleni*)

30/1 2 Mabamba swamp.

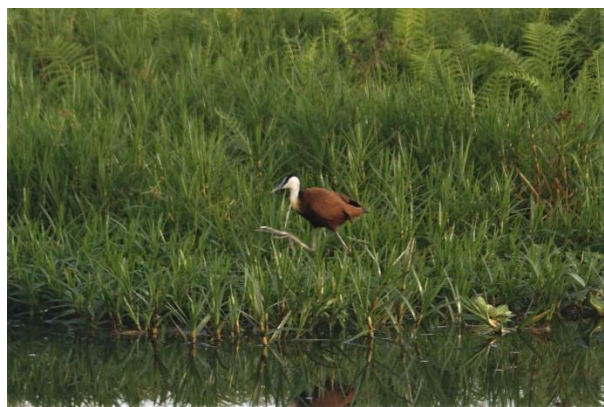
COMMON MOORHEN (*Gallinula chloropus*)

30/1 10+ Mabamba swamp.



AFRICAN JACANA (*Actophilornis africanus*)

30/1 100+ Mabamba swamp, 31/1 1 between Mabamba and Mburo, 1/2 1 Mburo. This species was very common at Mabamba swamps and the number of birds is estimated.



*African Jacana, Mabamba swamps, Sony 50 mm (Photo: EVR).*

LESSER JACANA (*Microparra capensis*)

30/1 1 Mabamba swamps, 7/2 1 Lake Edward.

GREY CROWNED CRANE (*Balearica regulorum*)

29/1 3 Mabira forest, 30/1 25+ Mabamba swamps, 31/1 4 Mburo, 1/2 7 between Mburo and Bwindi, 6/2 8 and 7/2 2 Queen Elisabeth National park, 12/2 2 Entebbe Botanical garden.

BLACK-BELLIED BUSTARD (*Eupodotis melanogaster*)

31/1 1 Mburo lake, 6/2 1 and 7/2 2 Queen Elisabeth national park.

BLACK-WINGED STILT (*Himantopus himantopus*)

28/1 2 Entebbe Botanical garden.

WATER THICK-KNEE (*Burhinus vermiculatus*)

30/1 3 Mabamba swamps, 31/3 4 Mburo, 7/2 1 Queen Elisabeth National park and 35+ Lake Edward, 8/2 2 Queen Elisabeth National park.

TEMMINCK'S COURSER (*Cursorius temminckii*)

7/2 2 Queen Elisabeth National park.

COLLARED PRATINCOLE (*Glareola pratincola*)

7/2 1 Queen Elisabeth National park and 2 Lake Edward.

BLACK-WINGED PRATINCOLE (*Glareola nordmanni*)

7/2 1 Queen Elisabeth National park.

SPUR-WINGED LAPWING (*Vanellus spinosus*)

28/1 2 Entebbe Botanical garden, 30/1 2 Mabamba swamps, 31/1 1 Mburo, 7/2 15+ Queen Elisabeth National park, 10/2 1 Semliki.

LONG-TOED LAPWING (*Vanellus crassirostris*)

30/1 5+ Mabamba swamps and 2 Mburo.

AFRICAN WATTLED LAPWING (*Vanellus senegallus*)

30/1 5+ and 31/1 4 Mburo, 6/2 1, 7/2 5 and 8/2 1 Queen Elisabeth Nationalpark, 7/2 2 Lake Edward, 8/2 1 Kibale.

SENEGAL LAPWING (*Vanellus lugubris*)

7/2 2 Queen Elisabeth National park and 2 Lake Edward.

KITTLITZ'S PLOVER (*Charadrius pecuarius*)

7/2 1 Queen Elisabeth National park and 30+ Lake Edward.

TREE-BANDED PLOVER (*Charadrius tricollaris*)

7/2 2 Lake Edward.

COMMON RINGED PLOVER (*Charadrius hiaticula*)

28/1 3 Entebbe Botanical garden, 30/1 2 Mabamba swamps, 31/1 3 Muro, 7/2 5 Queen Elisabeth National park.

CASPIAN PLOVER (*Charadrius asiaticus*)

7/2 2 Queen Elisabeth National park. One of them a male in full breeding plumage.

COMMON SANDPIPER (*Actitis hypoleucos*)

28/1 2 Entebbe Botanical garden, 31/1 2 Mburo lake, 7/2 3 Queen Elisabeth National park, 10/2 2 Simliki, 12/2 1 Entebbe Botanical garden.

WOOD SANDPIPER (*Tringa glareola*)

30/1 3 Mabamba swamps, 31/1 2 Mburo lake, 6/2 3 and 7/2 1 Queen Elisabeth National park, 7/2 1 Lake Edward, 10/2 2 Simliki.

GREEN SANDPIPER (*Tringa ochropus*)

28/1 1 Entebbe Botanical garden, 31/1 2 Mburo lake.

COMMON GREENSHANK (*Tringa nebularia*)

28/1 1 Entebbe Botanical garden, 7/2 1 Lake Edward.

MARSH SANDPIPER (*Tringa stagnatilis*)

7/2 1 Lake Edward.

LITTLE STINT (*Calidris minuta*)

10/2 19 Simliki.

AFRICAN SNIPE (*Gallinago nigripennis*)

7/2 1 Lake Edward.

GREY-HEADED GULL (*Larus cirrocephalus*)

7/2 70+ Lake Edward.

GULL-BILLED TERN (*Sterna nilotica*)

30/1 1 Mabamba swamps, 7/2 10+ Lake Edward.

TERN SP (*Chlidonias non det*)

7/2 2 Lake Edward, 12/2 340+ Entebbe Botanical garden. All probably White-winged Terns but at great distance and therefore difficult to identify.

WHITE-WINGED TERN (*Chlidonias leucopterus*)

12/2 18 including some individuals in full breeding plumage, Entebbe Botanical garden.

WHISKERED TERN (*Chlidonias hybridus*)

7/2 1 Lake Edward.



AFRICAN GREEN PIGEON (*Treron calva*)

28/1 1 Entebbe Botanical garden, 31/1 1 Mburo, 4/2 2 Bwindi, 6/2 2 Queen Elisabeth National park, 9/2 1 Kibale, 11/2 2 Semliki, 12/2 2 Entebbe Botanical garden.

WESTERN BRONZE-NAPED PIGEON (*Columba iriditorques*)

5/2 3 Buhoma.

SPECKLED PIGEON (*Columba guinea*)

30/1 10+ between Mabamba swamps and Mburo, 1/2 4 between Mburo and Bwindi, 6/2 2 Queen Elisabeth National park, 10/2 1 Semliki.

OLIVE PIGEON (*Columba arquatrix*)

3/2 2 Ruhija, 4/2 3 between Bwindi and Buhoma, 10/2 3 Semliki.

FERAL PIGEON (*Columba livia*)

29/1 6 Mabira forest was the only birds in the notebook, but other birds was seen at other places but not counted.

EMERALD-SPOTTED WOOD-DOVE (*Turtur chalcospilos*)

31/1 10+ Mburo lake, 1/2 2 Bwindi.

BLUE-SPOTTED WOOD-DOVE (*Turtur afer*)

31/1 4 Mburo lake, 4/2 1 Buhoma, 6/2 15+ and 7/2 2 Queen Elisabeth National park, 7/2 4 Lake Edward.

TAMBOURINE DOVE (*Turtur tympanistria*)

Seen at most visited locations and 30 birds counted.

NAMAQUA DOVE (*Oena capensis*)

30/1 1 Mabamba swamps.

RING-NECKED DOVE (*Streptopelia capicola*)

Quite common and we counted at least 30 birds especially in Queen Elisabeth National park. Not all birds were counted.

RED-EYED DOVE (*Streptopelia semitorquata*)

Quite common bird and the species was not counted.

LAUGHING DOVE (*Streptopelia senegalensis*)

Quite common bird and the species was not counted on this trip. Most common in Queen Elisabeth National park and Kibale.

EUROPEAN TURTLE DOVE (*Streptopelia turtur*)

7/2 1 Queen Elisabeth National park.

BROWN PARROT (*Poicephalus meyeri*)

28/1 2 Entebbe Botanical garden, 30/1 2 Mabamba swamps, 31/3 2 Mburo lake.

GREY PARROT (*Psittacus erithacus*)

28/1 4 and 12/2 4 Entebbe Botanical garden.

RED-HEADED LOVEBIRD (*Agapornis pullarius*)

30/1 4 Mabamba swamps, 31/1 3 Mburo.

GREAT BLUE TURACO (*Corythaeola cristata*)

28/1 1 Entebbe Botanical garden, 30/1 2 Mabamba swamps, 1/2 2 Mburo, 3/2 2 Bwindi, 8/2 10+ Kibale, 9/2 2 Kibale forest, 10/2 4 Semliki, 11/2 1 between Semliki and Entebbe, 12/2 10+ Entebbe Botanical garden.

ROSS'S TURACO (*Musophaga rossae*)

28/1 6 Entebbe Botanical garden, 31/1 1 Mburo lake, 5/2 10+ Buhoma, 6/2 2 Queen Elisabeth National park, 12/2 1 Entebbe Botanical garden.

BLACK-BILLED TURACO (*Tauraco shuetti*)

29/1 1 Mabira forest, 2/2 3, 3/2 4 and 4/2 4 Bwindi, 5/2 6 Buhoma.

BARE-FACED GO-AWAY-BIRD (*Corythaixoides personata*)

31/1 10+ Mburo lake, 6/2 2 Queen Elisabeth National park, 7/2 1 Lake Edward.

EASTERN GREY PLANTAIN-EATER (*Crinifer zonurus*)

28/1 10+ Entebbe Botanical garden, 30/1 1 Mburo, 11/2 4 between Semliki and Entebbe, 12/2 3 Entebbe Botanical garden.

LEVAILLANT'S CUCKOO (*Oxylophus levaillantii*)

2/2 1 Ruhija, 12/2 1 Entebbe Botanical garden.

AFRICAN CUCKOO (*Cuculus gularis*)

31/1 1 Mburo lake.

RED-CHESTED CUCKOO (*Cuculus solitaries*)

28/1 2 Entebbe Botanical garden, 1/2 1 Mburo, 3/2 1 Ruhija, 4/2 1 Bwindi, 5/2 1 Buhoma, 6/2 1 Queen Elisabeth National park, 9/2 2 Kibale, 10/2 1 Semliki, 12/2 1 Entebbe Botanical garden.

BARRED LONG-TAILED CUCKOO (*Cerococcyx montanus*)

4/2 1 Ruhija, 10/2 1 Semliki.

DUSKY LONG-TAILED CUCKOO (*Cerococcyx mechowi*)

29/1 1 Mabira forest, 9/2 1 Kibale.

DIEDERIK CUCKOO (*Chrysococcyx caprius*) 30/1 1 Mabamba swamps, 31/1 1 Mburo lake, 1/2 2 Mburo and 1 between Mburo and Bwindi.

KLAAS'S CUCKOO (*Chrysococcyx klaas*)

28/1 1 Entebbe Botanical garden, 29/1 1 Mabira forest, 31/1 1 Mburo lake, 12/2 1 Entebbe Botanical garden.

AFRICAN EMERALD CUCKOO (*Chrysococcyx cupreus*)

28/1 3 Entebbe Botanical garden, 3/2 1 Ruhija, 9/2 5 Kibale, 10/2 2 Semliki.

YELLOW-THROATED CUCKOO (*Chrysococcyx flavigularis*)

10/2 1 Semliki.

YELLOWBILL (*Ceuthmochares aereus*)

3/2 1 Ruhija.

WHITE-BROWED COUCAL (*Centropus superciliosus*)

31/1 5 Mburo, 6/2 10+ and 7/2 10+ Queen Elisabeth National park and 2 Lake Edward, 8/2 3 between Queen Elisabeth National park and Kibale.



BLUE-HEADED COUCAL (*Centropus monachus*)

30/1 20+ Mabamba swamps, 31/1 2 Mburo, 1/2 1 between Mburo and Bwindi, 3/2 1 and 4/2 1 Ruhija, 7/2 1 Queen Elisabeth National park.

OWL SP (*Otus non det*)

31/1 2 small owls seen around Rwokobo rock lodge but they were never identified. Probably African Scops-Owl (*Otus senegalensis*).

AFRICAN WOOD OWL (*Strix woodfordii*)

3/2 1 and 4/2 1 Ruhija, 5/2 1 Buhoma.

SOUTHERN WHITE-FACED OWL (*Ptilopsis granti*)

28/1 2 Entebbe Botanical garden. This species was formerly regarded as a subspecies of the Northern White-Faced Owl (*Ptilopsis leucotis*) but the two species are now commonly treated as separate species (Wikipedia).

VERREAUX'S EAGLE-OWL (*Bubo lacteus*)

31/1 1 Mburo lake.

SQUARE-TAILED NIGHTJAR (*Caprimulgus fossii*)

31/1 1 Mburo lake.

BLACK-SHOULDERED NIGHTJAR (*Caprimulgus nigriscapularis*)

31/1 1 at day roost + 1 heard Rwakobo rock lodge.

FRECKLED NIGHTJAR (*Caprimulgus tristigma*)

31/1 1 at day roost + 2 heard Rwakobo rock lodge.

LITTLE SWIFT (*Aapus affinis*)

Quite common on most visited locations and 55 birds was counted.

WHITE-RUMPED SWIFT (*Apus caffer*)

30/1 5+ Mabamba swamps, 5/2 1 Buhoma, 12/2 2 Entebbe Botanical garden.

ALPINE SWIFT (*Apus melba*)

11/2 1 Semliki.

AFRICAN BLACK SWIFT (*Apus barbatus*)

5/2 2 Buhoma.

EURASIAN SWIFT (*Apus apus*)

6/2 5+ Queen Elisabeth National park, 10/2 2 Semliki, 12/2 2 Entebbe Botanical garden.

AFRICAN PALM SWIFT (*Cypsiurus parvus*)

Quite common swift and seen at most locations and we counted at least 150+ birds. Most of them around Entebbe Botanical garden.

SPECKLED MOUSEBIRD (*Colius striatus*)

We found this mousebird common and fairly widespread seen on most locations. We counted 150 birds and most common in Queen Elisabeth National park.

BLUE-NAPED MOUSEBIRD (*Urocolius macrourus*)

31/1 15+ Mburo lake.

NARINA TROGON (*Apaloderma narina*)

3/2 2 Ruhija, 9/2 1 Kibale.

BAR-TAILED TROGON (*Apaloderma vittatum*)

3/2 1 Ruhija, 5/2 3 Buhoma.

PIED KINGFISHER (*Ceryle rudis*)

Most common kingfisher on this trip and we counted 285+ birds with most birds at Lake Edward.



*Pied Kingfishers at Lake Edward (Photo: EVR).*

STRIPED KINGFISHER (*Halcyon chelicuti*)

31/1 20+ Mburo lake.

GREY-HEADED KINGFISHER (*Halcyon leucocephala*)

6/2 1 and 7/2 1 Queen Elisabeth National park, 10/2 1 and 11/2 2 Semliki, 12/2 3 Entebbe Botanical garden.

WOODLAND KINGFISHER (*Halcyon senegalensis*)

28/1 30+ Entebbe Botanical garden, 31/1 2 Mburo lake, 4/2 1 Bwindi, 6/2 1 and 7/2 1 Queen Elisabeth National park, 11/2 2 Semliki, 12/2 1 Entebbe Botanical garden.

BLUE-BREASTED KINGFISHER (*Halcyon malimbica*)

29/1 1 Mabira forest, 9/2 1 Kibale, 10/2 1 Semliki.

MALACHITE KINGFISHER (*Alcedo cristata*)

28/1 1 Entebbe Botanical garden, 29/1 1 Mabira forest, 30/1 15+ Mabamba swamps and 2 between Mabamba and Mburo, 31/1 5 Mburo lake, 7/2 5+ Queen Elisabeth National park and Lake Edward, 8/2 1 Kibale.

AFRICAN PYGMY KINGFISHER (*Ispidina picta*)

8/2 4 Kibale, 10/2 2 Semliki, 12/2 1 Entebbe Botanical garden.

SHINING-BLUE KINGFISHER (*Alcedo quadribrachys*)

29/1 1 Mabira forest, 8/2 2 Kibale.

LITTLE BEE-EATER (*Merops pusillus*)

30/1 1 Mabamba swamps, 31/1 10 Mbuero lake, 1/2 1 Mbuero, 6/2 2 and 7/2 2 Queen Elisabeth National park and 2 Lake Edward, 8/2 3 Kibale.

CINNAMON-CHESTED BEE-EATER (*Merops oreobates*)

1/2 15+ Bwindi, 2/2 2 Ruhija, 3/2 2 Ruhija, 4/2 10+ between Bwindi and Buhoma, 8/2 2 Kibale.

BLUE-BREASTED BEE-EATER (*Merops variegatus*)

30/1 7 Mabamba swamps.

WHITE-THROATED BEE-EATER (*Merops albicollis*)

28/1 15+ Entebbe Botanical garden, 29/1 1 Mabira forest, 6/2 2 and 7/2 2 Queen Elisabeth National park, 8/2 2 Kibale, 10/2 2 Semliki, 12/2 10 Entebbe Botanical garden.

BLACK BEE-EATER (*Merops gularis*)

4/2 6 between Bwindi and Buhoma, 5/2 1 Buhoma.

EUROPEAN BEE-EATER (*Merops apiaster*)

30/1 6 between Mabamba swamps and Mbuero, 1/2 10+ Bwindi, 6/2 2 and 8/2 2 Queen Elisabeth National park, 8/2 5 Kibale.

BLUE-CHEEKED BEE-EATER (*Merops persicus*)

Quite common in Queen Elisabeth National park, Lake Edward and Kibale and we counted 55 birds.

RED-THROATED BEE-EATER (*Merops bulocki*)

7/2 2 Queen Elisabeth National park.

BROAD-BILLED ROLLER (*Eurystomus glaucurus*)

Seen on most locations in small numbers and we counted 28 birds in total.

LILAC-BREASTED ROLLER (*Coracias caudate*)

30/1 8+ Mabamba swamps, 31/1 10+ Mbuero lake, 1/2 5 between Mbuero and Bwindi.



Lilac-breasted Roller, Mbuero Lake, Sony 50 mm (Photo: EVR).



WHITE-HEADED WOOD-HOOPOE (*Phoeniculus bollei*)  
5/2 7 Buhoma.

AFRICAN HOOPOE (*Upupa Africana*)  
31/1 1 Mburo lake.

COMMON SCIMITARBILL (*Rhinopomastus cyanomelas*)  
31/1 1 Mburo lake, 6/2 2 Queen Elisabeth National park.

AFRICAN GREY HORNBILL (*Tockus nasutus*)  
28/1 1 Entebbe Botanical garden, 1/2 1 Bwindi, 3/2 1 Ruhija.

CROWNED HORNBILL (*Tockus alboterminatus*)  
28/1 1 Entebbe Botanical garden, 9/2 3 Kibale.

AFRICAN PIED HORNBILL (*Tockus fasciatus*)  
29/1 4 Mabira forest, 31/1 2 Mburo lake, 10/2 1 Semliki.

PIPING HORNBILL (*Bycanistes fistulator*)  
10/2 6 Semliki.

RED-BILLED DWARF HORNBILL (*Tockus camurus*)  
10/2 4 Semliki.

BLACK-AND-WHITE-CASQUED HORNBILL (*Bycanistes subcylindricus*)  
Quite common around and seen at almost all locations in small numbers. We counted 35 birds.

BLACK-CASQUED WATTLED HORNBILL (*Ceratogymna atrata*)  
10/2 2 Semliki.

YELLOW-RUMPED TINKERBIRD (*Pogoniulus bilineatus*)  
Fairly common species seen on most visited locations and we counted 30+ birds. Most of them in Ruhija and Buhoma areas.

YELLOW-THROATED TINKERBIRD (*Pogoniulus subsulphureus*)  
9/2 1 Kibale, 10/2 2 Semliki.

RED-RUMPED TINKERBIRD (*Pogoniulus atroflavus*)  
3/2 2 Ruhija.

WESTERN GREEN TINKERBIRD (*Pogoniulus coryphaeus*)  
1/2 2 Ruhija.

SPECKLED TINKERBIRD (*Pogoniulus scolopaceus*)  
29/1 10+ Mabira forest, 1/2 1 Bwindi, 4/2 2 Buhoma.

GREY-THROATED BARBET (*Gymnobucco bonapartei*)  
29/1 2 Mabira forest, 3/2 4 Ruhija, 5/2 2 Buhoma.

YELLOW-FRONTED TINKERBIRD (*Pogoniulus chrysoconus*)  
28/1 10+ Entebbe Botanical garden, 29/1 2 Mabira forest, 31/1 2 Mburo lake, 6/2 1 Queen Elisabeth National park, 9/2 1 Kibale.

SPOT-FLANKED BARBET (*Tricholaema lachrymosa*)  
30/1 1 Mburo, 31/1 2 Mburo lake, 1/2 1 Bwindi, 10/2 1 Semliki.

HAIRY-BREASTED BARBET (*Tricholaema hirsute*)

4/2 1 Bwindi, 5/2 1 Buhoma, 10/2 1 Semliki.

YELLOW-SPOTTED BARBET (*Buccanodon duchaillui*)

29/1 3 Mabira forest, 9/2 2 Kibale.

WHITE-HEADED BARBET (*Lybius leucocephalus*)

31/1 2 Mburo lake, 6/2 2 Queen Elisabeth National park.

DOUBLE-THOOTHED BARBET (*Lybius bidentatus*)

31/1 1 Mburo, 6/2 2 Queen Elisabeth National park.

CRESTED BARBET (*Trachyphonus vaillantii*)

31/1 1 Mburo lake, 1/2 1 Mburo.

YELLOW-BILLED BARBET (*Trachylaemus purpuratus*)

29/1 2 Mabira forest, 9/2 2 Kibale.

GREATER HONEYGUIDE (*Indicator indicator*)

31/1 1 Mburo lake, 4/2 1 Ruhija.

WILLCOCK'S HONEYGUIDE (*Indicator willcocksi*)

5/2 2 Buhoma.

CASSIN'S HONEYGUIDE (*Prodotiscus insignis*)

3/2 1 Ruhija, 4/2 1 Buhoma.

BROWN-EARED WOODPECKER (*Campethera caroli*)

29/1 1 Mabira forest, 10/2 4 Semliki.

NUBIAN WOODPECKER (*Campethera nubica*)

6/2 2, 7/2 2 and 8/2 2 Queen Elisabeth National park.

CARDINAL WOODPECKER (*Dendropicus fuscescens*)

31/1 1 Mburo lake, 1/2 2 Mburo, 6/2 2 Queen Elisabeth National park, 7/2 1 Lake Edward.

BEARDED WOODPECKER (*Dendropicus namaquus*)

31/1 1 Mburo lake.

YELLOW-CRESTED WOODPECKER (*Dendropicos xantholophus*)

28/1 1 Entebbe Botanical garden, 8/2 1 Queen Elisabeth National park, 9/2 4+ Kibale forest.

GREY WOODPECKER (*Dendropicos goertae*)

28/1 1 Entebbe Botanical garden, 11/2 1 Semliki, 12/2 1 Entebbe Botanical garden.

AFRICAN BROADBILL (*Smithornis capensis*)

5/2 1 Buhoma forest.

GREEN-BREASTED PITTA (*Pitta reichenowi*)

9/2 3 Kibale forest – one seen well by some of the participants close up and two heard only nearby by all. The birds were found in the forest behind the Kibale Chimpanzee center. One of the most wanted species on this trip.

RUFIOUS-NAPED LARK (*Mirafrapa africana*)

31/1 1 Mburo, 6/2 3 and 7/2 10+ Queen Elisabeth National park.

FLAPPET LARK (*Mirafra rufocinnamomea*)

6/2 1 and 7/2 2 Queen Elisabeth National park.

ROCK MARTIN (*Hirundo fuligula*)

28/1 1 Entebbe Botanical garden, 3/2 2 Ruhija, 5/2 2 Buhoma.

SAND MARTIN (*Riparia riparia*)

30/1 4 Mabamba swamps, 6/2 20 Queen Elisabeth National park, 7/2 150+ Lake Edward.

RED-RUMPED SWALLOW (*Hirundo daurica*)

6/2 1 Queen Elisabeth National park.

MOSQUE SWALLOW (*Hirundo senegalensis*)

5/2 1 Buhoma, 11/2 2 Semliki.

RUFIOUS-CHESTED SWALLOW (*Hirundo semirufa*)

30/1 1 between Mabamba swamps and Rwakobo lodge, 1/2 2 Bwindi.

LESSER STRIPED SWALLOW (*Hirundo abyssinica*)

Quite common on most visited locations and we counted 89 birds with most in Queen Elisabeth National park.

BARN SWALLOW (*Hirundo rustica*)

Common around and with maximum 7/2 3.000 Lake Edward.

ANGOLA SWALLOW (*Hirundo angolensis*)

31/1 1 Mburo lake, 5/2 1 Buhoma, 6/2 2 Queen Elisabeth National park.

WIRE-TAILED SWALLOW (*Hirundo smithii*)

6/2 3 and 7/2 1 Queen Elisabeth National park.

BLACK SAW-WING (*Psalidoprocne holomelas*)

1/2 8 between Mburo and Bwindi, 2/2 10 Ruhija, 3/2 4 Ruhija, 4/2 5 and 5/2 2 Buhoma.

WHITE-HEADED SAW-WING (*Psalidoprocne albiceps*)

29/1 5+ Mabira forest.

BLUE SWALLOW (*Hirundo atrocaerulea*)

30/1 2 Mabamba swamps.

AFRICAN PIED WAGTAIL (*Motacilla aguimp*)

28/1 3 Entebbe Botanical garden, 7/2 1 Queen Elisabeth National park and 1 Lake Edward, 11/2 1 between Semliki and Entebbe.

MOUNTAIN WAGTAIL (*Motacilla clara*)

5/2 2 Buhoma.

CAPE WAGTAIL (*Motacilla capensis*)

30/1 2 Mabamba swamps, 5/2 1 Buhoma.

YELLOW WAGTAIL (*Motacilla flava*)

Quite common on most visited locations and we counted 175 birds with the highest numbers at Entebbe Botanical garden.



YELLOW-THROATED LONGCLAW (*Macronyx croceus*)

30/1 1 Mabamba swamps, 31/1 4 Mburo lake, 6/2 15+ and 7/2 20+ Queen Elisabeth National park, 8/2 2 Kibale, 11/2 1 Semliki.

GRASSLAND PIPIT (*Anthus cinnamomeus*)

30/1 1 Mabamba swamps, 7/2 1 Queen Elisabeth National park.

PLAIN-BACKED PIPIT (*Anthus leucophrys*)

31/1 2 Mburo lake, 7/2 1 Queen Elisabeth National park.

PETIT'S CUCKOO-SHRIKE (*Campephaga petiti*)

4/2 2 and 5/2 2 Buhoma.

GREY CUCKOO-SHRIKE (*Coracina caesia*)

2/2 2 and 3/2 1 Ruhija, 4/2 1 Buhoma.

WESTERN NICATOR (*Nicator chloris*)

29/1 1 Mabira forest, 8/2 1 Kibale.

YELLOW-THROATED NICATOR (*Nicator vireo*)

10/2 1 heard only Semliki.

COMMON BULBUL (*Pycnonotus barbatus*)

Very common bird and seen at all visited locations. We counted 210+ birds. Greatest numbers at Entebbe Botanical garden.

YELLOW-WHISKERED GREENBUL (*Eurillas latirostris*)

29/1 1 Mabira forest, 1/2 3 Bwindi, 2/2 5 Ruhija, 3/2 10+ Ruhija, 4/2 2 Buhoma, 5/2 2 Buhoma.

LITTLE GREENBUL (*Eurillas virens*)

28/1 5 Entebbe Botanical garden, 29/1 8 Mabira forest, 3/2 4 and 4/2 10+ Ruhija, 5/2 1 Buhoma, 9/2 5+ Kibale, 12/2 1 Entebbe Botanical garden.

EASTERN MOUNTAIN GREENBUL (*Arizelocichla nigriceps*)

3/2 1 Ruhija.

SLENDER-BILLED GREENBUL (*Stelgidillas gracilirostris*)

2/2 1 Ruhija, 4/2 1 and 5/2 1 Buhoma.

KAKAMEGA GREENBUL (*Arizelochichla kakamegae*) \*

5/2 1 Buhoma.

Often treated as a race of Shelley's Greenbul (*A. masukuensis*). Originally described in the genus *xenochichla* but change in 2010 to *Arizelochichla* (Wikipedia).

CABANIS'S GREENBUL (*Phyllastrephus cabanisi*)

4/2 1 Buhoma.

LITTLE GREY GREENBUL (*Eurillas gracilis*)

29/1 1 Mabira forest, 4/2 2 Ruhija.

ANSORGE'S GREENBUL (*Eurillas ansorgei*)

5/2 1 Buhoma.

TORO OLIVE GREENBUL (*Phyllastrephus hypochloris*)

10/2 2 Semliki.

XAVIER'S GREENBUL (*Phyllastrephus xavieri*)

10/2 3 Semliki.

RED-TAILED BRISTLEBILL (*Bleda syndactyla*)

29/1 2 Mabira forest, 5/2 2 Buhoma, 10/2 2 Semliki.

RED-TAILED GREENBUL (*Criniger calurus*)

29/1 1 Mabira forest, 4/2 2 Buhoma, 10/2 2 Semliki.

YELLOW-THROATED GREENBUL (*Chlorocichla flavicollis*)

28/1 1 Entebbe Botanical garden.

HONEYGUIDE GREENBUL (*Baeopogon indicator*)

29/1 1 Mabira forest, 4/2 1 Buhoma, 9/2 1 Kibale

EQUATORIAL AKALAT (*Sheppardia aequatorialis*)

3/2 1 Ruhija, 5/2 3 Buhoma.

FOREST ROBIN (*Stiphornis erythrothorax*)

29/1 3 Mabira forest, 10/2 1 Semliki.

FIRE-CRESTED ALETHE (*Alethe diademata*)

29/1 1 Mabira forest, 5/2 1 Buhoma.

WHITE-BROWED ROBIN-CHAT (*Cossypha heuglini*)

Seen at almost all visited locations but only in small numbers. We counted 26 birds.

BLUE-SHOULDERED ROBIN-CHAT (*Cossypha cyanocampter*)

9/2 1 Kibale forest.

SNOWY-HEADED ROBIN-CHAT (*Cossypha niveicapilla*)

31/1 1 Mburo lake, 1/2 1 Ruhija, 8/2 1 Queen Elisabeth National park, 9/2 1 Kibale, 10/2 1 Semliki, 11/2 1 between Semliki and Entebbe, 12/2 1 Entebbe Botanical garden.

GREY-WINGED ROBIN-CHAT (*Cossypha polioptera*)

10/2 1 Semliki.

ARCHER'S ROBIN-CHAT (*Cossypha archeri*)

1/2 1 Bwindi.

WHITE-BELLIED ROBIN-CHAT (*Cossyphicula roberti*)

5/2 2 Buhoma.

AFRICAN THRUSH (*Turdus pelios*)

28/1 4 Entebbe Botanical garden, 29/1 1 Mabira forest, 4/2 5 Ruhija, 7/2 2 and 8/2 5 Queen Elisabeth National park and 5 Kibale, 9/2 2 Kibale forest, 11/2 2 between Semliki and Entebbe, 12/2 5 Entebbe Botanical garden.

WHITE-TAILED ANT-THRUSH (*Neocossyphus poensis*)

5/2 1 Buhoma.

RUFIOUS FLYCATCHER-THRUSH (*Stirzorchina fraseri*)

29/1 1 Mabira forest, 5/2 1 Buhoma, 10/2 1 Semliki.

SOOTY CHAT (*Myrmecocichla nigra*)

31/1 2 Mburo lake, 6/2 20+ Queen Elisabeth National park, 7/2 5 Lake Edward.

COMMON STONECHAT (*Saxicola torquata*)

4/2 1 Ruhija.

WHINCHAT (*Saxicola rubetra*)

30/1 1 Mabamba swamps, 6/2 1 and 7/2 1 Queen Elisabeth National park.

WHITE-BROWED SCRUB-ROBIN (*Cercotrichas leucophrys*)

1/2 1 Bwindi.

GREATER SWAMP WARBLER (*Acrocephalus rufescens*)

30/1 1 Mabamba swamps.

WHITE-WINGED WARBLER (*Bradypterus carpalis*)

31/1 1 Mburo lake, 10/2 1 Semliki.

WILLOW WARBLER (*Phylloscopus trochilus*)

28/1 1 Entebbe Botanical garden, 29/1 1 Mabira forest, 8/2 2 Queen Elisabeth National park.

COMMON CHIFFCHAFF (*Phylloscopus collybita*)

1/2 2 Mburo lake, 2/2 2 Bwindi.

RED-FACED WOODLAND WARBLER (*Phylloscopus laetus*) \*

1/2 2 Bwindi, 3/2 2 and 4/2 1 Ruhija, 5/2 1 Buhoma.

GREEN HYLIA (*Hylia prasina*)

29/1 1 Mabira forest, 4/2 1 Ruhija, 9/2 1 Kibale.

SHORT-TAILED WARBLER (*Hemitesia neumanni*) \*

5/2 1 Buhoma.

WHITE-BROWED CROMBEC (*Sylvietta leucophrys*)

3/2 4 and 4/2 1 Ruhija.

GREEN CROMBEC (*Sylvietta virens*)

28/1 2 Entebbe Botanical garden, 29/1 2 Mabira forest, 1/2 1 Mburo lake and 2 Bwindi, 8/2 1 Kibale, 10/2 1 Semliki.

BLACK-FACED RUFOUS WARBLER (*Batumocercus rufus*)

1/2 1 Bwindi, 4/2 2 Ruhija, 5/2 1 Buhoma.

ZITTING CISTICOLA (*Cisticola juncidis*)

31/1 2 Mburo lake, 6/2 2, 7/2 2 and 8/2 1 Queen Elisabeth National park.

WINDING CISTICOLA (*Cisticola galactotes*)

6/2 1 Queen Elisabeth National park.

SINGING CISTICOLA (*Cisticola cantans*)

30/1 2 Mabamba swamps, 31/1 1 and 1/2 1 Mburo lake, 7/2 2 Queen Elisabeth National park.

RED-FACED CISTICOLA (*Cisticola erythrops*)

6/2 2 Queen Elisabeth National park.

CHUBB'S CISTICOLA (*Cisticola chubby*)

31/1 1 Mburo lake, 2/2 2 Ruhija, 4/2 5 Buhoma, 6/2 2 Queen Elisabeth National park.



TRILLING CISTICOLA (*Cisticola woosnami*)

31/1 4 and 1/2 5 Mburo lake.

LONG-TAILED CISTICOLA (*Cisticola angusticaudus*)

31/1 1 Mburo lake.

TAWNY-FLANKED PRINIA (*Prinia subflava*)

6/2 2 Queen Elisabeth National park.

BANDED PRINIA (*Prinia bairdii*)

3/2 1 and 4/2 1 Ruhija.

GREY-CAPPED WARBLER (*Eminia lepida*)

31/1 1 Mburo lake, 10/2 1 and 11/2 1 Semliki.

GREY-BACKED CAMAROPTERA (*Camaroptera brachyura*)

28/1 5+ Entebbe Botanical garden, 29/1 1 Mabira forest, 31/1 1 Mburo lake, 6/2 1 and 7/2 1 Queen Elisabeth National park, 10/2 1 Semliki, 12/2 5+ Entebbe Botanical garden.

OLIVE-GREEN CAMAROPTERA (*Camaroptera chloronota*)

29/1 1 Mabira forest, 5/2 1 Buhoma.

YELLOW-BREASTED APALIS (*Apalis flavida*)

29/1 1 Mabira forest, 31/1 2 Mburo lake, 4/2 1 Ruhija.

GREY APALIS (*Apalis cinerea*)

29/1 1 Mabira forest, 4/2 1 Buhoma.

CHESTNUT-THROATED APALIS (*Apalis porphyrolaema*)

29/1 1 Mabira forest, 2/2 2 Ruhija.

BUFF-THROATED APALIS (*Apalis rufogularis*)

29/1 1 Mabira forest, 30/1 1 Mabamba swamps, 10/2 2 Semliki.

RWENZORI APALIS (*Apalis ruwenzorii*) \*

3/2 2 and 4/2 1 Ruhija.

BLACK-THROATED APALIS (*Apalis jacksoni*)

29/1 1 Mabira forest, 3/2 1 Ruhija.

MOUNTAIN MASKED APALIS (*Apalis personata*) \*

1/2 1 Mburo lake, 3/2 1 Ruhija.

WHITE-EYED SLATY FLYCATCHER (*Melaenornis fischeri*)

1/2 2 Bwindi, 3/2 2 and 4/2 7+ Ruhija.

SOUTHERN BLACK FLYCATCHER (*Melaenornis pammelaina*)

1/2 1 Bwindi.

NORTHERN BLACK FLYCATCHER (*Melaenornis edolioides*)

28/1 1 Entebbe Botanical garden, 7/2 10+ Queen Elisabeth National park, 7/2 3 Kibale.

ASHY FLYCATCHER (*Muscicapa caerulescens*)

12/2 1 Entebbe Botanical garden.

AFRICAN DUSKY FLYCATCHER (*Muscicapa adusta*)

3/2 1 and 4/2 2 Ruhija, 7/2 1 and 8/2 2 Queen Elisabeth National park, 9/2 1 Kibale.

GREY-THROATED FLYCATCHER (*Myioparus griseigularis*)

29/1 Mabira forest, 5/2 1 Buhoma, 9/2 1 Kibale.

SWAMP FLYCATCHER (*Muscicapa aquatic*)

30/1 3 Mabamba swamps, 31/1 3 Mburo lake, 7/2 9 Lake Edward.

CASSIN'S GREY FLYCATCHER (*Muscicapa cassini*)

8/2 1 Queen Elisabeth National park.

DUSKY-BLUE FLYCATCHER (*Muscicapa comitata*)

4/2 2 and 5/2 1 Ruhija, 8/2 2 Kibale, 10/2 1 Semliki.

CHIN-SPOT BATIS (*Batis molitor*)

1/2 1 Mburo lake, 3/2 4 and 3/2 1 Ruhija, 10/2 1 Semliki.

RWENZORI BATIS (*Batis diops*) \*

3/2 2 and 4/2 1 Ruhija.

BLACK-AND-WHITE SHRIKE-FLYCATCHER (*Bias musicus*)

28/1 Entebbe Botanical garden, 4/2 2 Ruhija, 5/2 1 Buhoma, 8/2 1 Kibale, 10/2 1 Semliki.

BROWN-THROATED WATTLE-EYE (*Platysteira cyanea*)

29/1 2 Mabira forest, 5/2 1 Buhoma.

CHESTNUT WATTLE-EYE (*Dyaphorophya castanea*)

29/1 3 Mabira forest, 4/2 1 Ruhija, 10/2 1 Semliki.

AFRICAN PARADISE-FLYCATCHER (*Terpsiphone viridis*)

3/2 1 and 4/2 1 Ruhija, 8/2 1 Queen Elisabeth National park, 10/2 1 Semliki, 12/2 1 Entebbe Botanical garden.

RED-BELLIED PARADISE-FLYCATCHER (*Terpsiphone rufiventer*)

29/1 2 Mabira forest, 9/2 1 Kibale, 10/2 2 Semliki.

BLUE-HEADED CRESTED-FLYCATCHER (*Trochocercus nitens*)

10/2 1 Semliki.

WHITE-TAILED BLUE-FLYCATCHER (*Elminia albicauda*)

1/2 2 Mburo lake, 3/2 1 Ruhija, 4/2 4 Buhoma, 7/2 1 Lake Edward, 8/2 2 Kibale.

SCALY-BREASTED ILLADOPSIS (*Illadopsis albipectus*)

29/1 2 Mabira forest, 5/2 1 Buhoma, 9/2 3 Kibale, 10/2 2 Semliki.

RWENZORI HILL-BABBLER (*Pseudoalcippe abyssinica*) \*

1/2 1 Bwindi, 3/2 1 Ruhija.

The Rwenzori Hill-Babblers was formerly considered to be a conspecific with the African Hill-Babblers but is today split to a new species. Mentioned in Stevenson & Fanshawe (2002 p. 430) as African Hill-Babblers (Wikipedia, BirdLife Datazone).

ARROW-MARKED BABBLER (*Turdoides jardineii*)

7/2 4 and 8/2 2 Queen Elisabeth National park.

BLACK-LORED BABBLER (*Turdoides sharpie*)

31/1 2 Mburo lake, 6/2 25 and 7/2 5 Queen Elisabeth National park, 8/2 3 Kibale.

DUSKY TIT (*Parus funereus*)

3/2 1 Ruhija, 5/2 1 Buhoma, 9/2 1 Kibale forest, 10/2 1 Semliki.

WHITE-WINGED TIT (*Parus leucomelas*)

31/1 2 Mburo lake.

STRIPE-BREASTED TIT (*Parus fasciventer*) \*

3/2 2 Ruhija, 4/2 5+ Buhoma.

YELLOW WHITE-EYE (*Zosterops senegalensis*)

Seen at almost all locations but in small numbers. We counted 20 birds.

BRONZE SUNBIRD (*Nectarinia kilimensis*)

4/2 1 and 5/2 1 Ruhija, 8/2 1 Queen Elisabeth National park and 10 Kibale, 10/2 1 Semliki, 11/2 1 between Semliki and Entebbe.

GOLDEN-WINGED SUNBIRD (*Nectarinia reichenowi*)

31/1 1 Mburo lake.

PURPLE-BREASTED SUNBIRD (*Nectarinia purpureiventris*) \*

3/2 1 and 4/2 3 Ruhija, 5/2 2 Buhoma, 8/2 3 Kibale.

GREEN-HEADED SUNBIRD (*Cyanomitra verticalis*)

28/1 2 Entebbe Botanical garden, 31/1 1 Mburo lake, 4/2 3 Ruhija, 10/2 1 Semliki.

BLUE-HEADED SUNBIRD (*Cyanomitra alinae*) \*

1/2 2 between Mburo lake and Bwindi, 3/2 2 and 4/2 1 Ruhija.

NORTHERN DOUBLE-COLLARED SUNBIRD (*Cinnyris preussi*)

1/2 1 between Mburo lake and Bwindi, 3/2 4 and 4/2 2 Ruhija.

OLIVE-BELLIED SUNBIRD (*Cinnyris chlorophygia*)

28/1 3 Entebbe Botanical garden, 2/2 2 and 4/2 1 Ruhija, 8/2 1 Queen Elisabeth National park and 1 Kibale, 9/2 1 Kibale, 12/2 2 Entebbe Botanical garden.

REGAL SUNBIRD (*Cinnyris regia*) \*

3/2 3 Ruhija.

GREEN-THROATED SUNBIRD (*Chalcomitra rubecens*)

28/1 1 Entebbe Botanical garden.

GREEN SUNBIRD (*Anthreptes rectirostris*)

28/1 2 Entebbe Botanical garden, 29/1 1 Mabira forest, 30/1 1 between Mabira and Mabamba swamps, 5/2 1 Buhoma, 8/2 1 Queen Elisabeth National park, 9/2 1 Kibale.

OLIVE SUNBIRD (*Cyanomitra olivacea*)

28/1 2 Entebbe Botanical garden, 31/1 1 Mburo lake, 3/2 1 and 4/2 2 Ruhija, 8/2 2 Queen Elisabeth National park, 10/2 1 Semliki.

GREY-HEADED SUNBIRD (*Deleornis axillaris*)

5/2 1 Buhoma, 10/2 2 Semliki.

COPPER SUNBIRD (*Cinnyris cuprea*)

1/2 1 between Mburo lake and Bwindi, 2/2 1 and 4/2 1 Ruhija.

SUPERB SUNBIRD (*Cinnyris superba*)

28/1 1 Entebbe Botanical garden.

MARICO SUNBIRD (*Cinnyris mariquersis*)

31/1 2 Mburo lake, 1/2 1 between Mburo and Bwindi, 4/2 1 Ruhija.

SCARLET-CHESTED SUNBIRD (*Chalcomitra senegalensis*)

28/1 3 Entebbe Botanical garden, 30/1 2 Mabamba swamps, 8/2 2 Kibale, 12/2 5 Entebbe Botanical garden.

RED-CHESTED SUNBIRD (*Cinnyris erythrocerca*)

28/1 2 Entebbe Botanical garden, 7/2 1 Queen Elisabeth National park.

VARIABLE SUNBIRD (*Cinnyris venusta*)

Quite common sunbird and especially in Ruhija / Bwindi areas. We counted 30+ birds.

COLLARED SUNBIRD (*Hedydipna collaris*)

28/1 1 Entebbe Botanical garden, 3/2 1 and 4/2 3 Ruhija, 8/2 2 Kibale.

NORTHERN FISCAL (*Lanius humeralis*)

Quite common bird and we counted 68 birds especially around Ruhija and Queen Elisabeth National park.

GREY-BACKED FISCAL (*Lanius excubitoroides*)

Also this species was very common around and we counted at least 95+ birds with most in Queen Elisabeth National park.

MACKINNON'S FISCAL (*Lanius mackinnoni*)

3/2 1 Ruhija, 5/2 1 Buhoma, 6/2 1 and 7/2 1 Queen Elisabeth National park, 10/2 1 Semliki.

TROPICAL BOUBOU (*Laniarius aethiopicus*)

30/1 2 Mburo lake.

LÜDHER'S BUSH-SHRIKE (*Laniarius luehderi*)

1/2 2 between Mburo lake and Bwindi, 3/2 2 and 4/2 1 Ruhija, 5/2 2 Buhoma.

BLACK-HEADED GONOLEK (*Laniarius erythrogaster*)

Quite common species in Bwindi and Queen Elisabeth National park with 35+ birds counted.

PAPYRUS GONOLEK (*Laniarius mufumbiri*)

30/1 1 and 31/1 1 Mabamba swamps, 7/2 3 Queen Elisabeth National park, 10/2 1 Semliki, 11/2 2 between Semliki and Entebbe.

SLATE-COLOURED BOUBOU (*Laniarius funebris*)

1/2 2 Bwindi, 6/2 2 Queen Elisabeth National park.

ALBERTINE SOOTY BOUBOU (*Laniarius holomelas*)

1/2 1 between Mburo and Bwindi.

WILLARD'S SOOTY BOUBOU (*Laniarius willardi*)

5/2 1 Buhoma.

The species was first described in 2010 based on five specimens and the species is only found in the Albertine Rift area (Wikipedia, Voelker et al 2010).



BRUBRU (*Nilaus afer*)

31/1 1 Mburo lake, 1/2 1 between Mburo and Bwindi, 12/2 1 Entebbe Botanical garden.

NORTHERN PUFFBACK (*Dryoscopus gambensis*)

28/1 2 Entebbe Botanical garden, 3/2 1 Ruhija.

PINK-FOOTED PUFFBACK (*Dryoscopus senegalensis*)

4/2 1 Buhoma.

BLACK-CROWNED TCHAGRA (*Tchagra senegala*)

7/2 1 Queen Elisabeth National park.

BROWN-CROWNED TCHAGRA (*Tchagra australis*)

1/2 1 between Mburo lake and Bwindi, 4/2 1 Buhoma, 6/2 1 and 7/2 1 Queen Elisabeth National park, 8/2 1 Kibale.

SULPHUR-BREASTED BUSH-SHRIKE (*Malaconotus sulfureopectus*)

31/1 1 and 1/2 2 Mburo lake, 4/2 1 Ruhija.

MANY-COLOURED BUSH-SHRIKE (*Malaconotus multicolor*)

4/2 1 Ruhija.

BOCAGE'S BUSH-SHRIKE (*Malaconotus bocagei*)

4/2 1 Ruhija.

FORK-TAILED DRONGO (*Dicrurus adsimilis*)

Few seen around on most visited localities and we counted 17 birds.

VELVET-MANTLED DRONGO (*Duicrurus modestus*)

10/2 1 Semliki.

PIAPIAC (*Ptilostomus afer*)

29/1 2 Mabira forest, 7/2 2 and 8/2 2 Queen Elisabeth National park.

PIED CROW (*Corvus albus*)

Very common species around but not all counted. We counted 185 birds.

WHITE-NAPED RAVEN (*Corvus albicollis*)

1/2 1 Bwindi.

AFRICAN BLACK-HEADED ORIOLE (*Oriolus larvatus*)

12/2 1 Entebbe Botanical garden.

MONTANE ORIOLE (*Oriolus percivali*)

3/2 2 and 4/2 1 Ruhija.

WESTERN BLACK-HEADED ORIOLE (*Oriolus nigripennis*)

29/1 3 Mabira forest, 9/2 3 Kibale forest, 10/2 3 Semliki.

YELLOW-BILLED OXPECKER (*Buphagus africanus*)

31/1 7 Mburo lake, 6/2 2 and 7/2 10+ Queen Elisabeth National park.

STUHLMANN'S STARLING (*Poeoptera stuhlmanni*) \*

5/2 1 Buhoma, 6/2 2 Queen Elisabeth National park.

NARROW-TAILED STARLING (*Poeoptera lugubris*)

4/2 4 Ruhija, 5/2 5 Buhoma.

CHESTNUT-WINGED STARLING (*Onychognathus fulgidus*)

29/1 2 Mabira forest.

WALLER'S STARLING (*Onychognathus walleri*)

3/2 5 and 4/2 2 Ruhija.

GREATER BLUE-EARED STARLING (*Lamprotornis chalybaeus*)

31/1 1 Mburo lake.

RÜPPELL'S LONG-TAILED STARLING (*Lamprotornis purpuropterus*)

Quite common species and especially around Mburo lake and Queen Elisabeth National park. We counted 125 birds on this trip.

PURPLE STARLING (*Lamprotornis purpureus*)

11/2 2 between Semliki and Entebbe.

PURPLE-HEADED STARLING (*Lamprotornis purpureiceps*)

8/2 2 Kibale.

SPLENDID STARLING (*Lamprotornis splendidus*)

Fairly common around Entebbe Botanical garden and Mburo lake, but we didn't find it at Ruhija, Buhoma and Semliki. We counted 40 birds on the whole trip.

VIOLET-BACKED STARLING (*Cinnyricinclus leucogaster*)

6/2 30+ Queen Elisabeth National park near the DR Congo border, 8/2 1 Kibale.

SHARPE'S STARLING (*Cinnyricinclus sharpie*)

4/2 1 Ruhija.

HOUSE SPARROW (*Passer domesticus*)

31/1 2 Mburo lake, 1/2 5 Bwindi.

GREY-HEADED SPARROW (*Passer griseus*)

A common species around and we counted 125 birds in total but not all birds have been counted on this trip.

BLACK-HEADED WEAVER (*Ploceus cucullatus*)

Very common bird and the species was seen at almost all localities. We counted 300+ birds.

LESSER MASKED WEAVER (*Ploceus intermedius*)

31/1 2 Mburo lake, 8/2 2 Queen Elisabeth National park.

SPECTACLED WEAVER (*Ploceus ocularis*)

30/1 2 Mabamba swamps, 31/1 1 Mburo lake, 10/2 2 Semliki.

BLACK-NECKED WEAVER (*Ploceus nigricollis*)

29/1 1 Mabira forest, 31/1 3 Mburo lake, 4/2 2 Buhoma, 10/2 1 Semliki.



*Black-Headed Weaver nesting, Mabamba swamps (Photo: EVR).*

BAGLAFECHE WEAVER (*Ploceus baglafecht*)

30/1 1 Mabamba swamps, 1/2 2 between Mburo and Bwindi, 2/2 1 and 4/2 2 Ruhija, 10/2 1 Semliki.

LITTLE WEAVER (*Ploceus luteolus*)

28/1 3 Entebbe Botanical garden.

SLENDER-BILLED WEAVER (*Ploceus pelzelni*)

30/1 2 Mabamba swamps, 31/1 3 Mburo lake, 3/2 1 Ruhija, 10/2 1 Semliki.

GOLDEN-BACKED WEAVER (*Ploceus jacksoni*)

12/2 2 Entebbe Botanical garden.

YELLOW-BACKED WEAVER (*Ploceus melanocephalus*)

28/1 5 and 12/2 10 Entebbe Botanical garden.

NORTHERN BROWN-THROATED WEAVER (*Ploceus castanops*)

We counted 75+ birds around with most of them in Mabamba swamps.

COMPACT WEAVER (*Ploceus superciliosus*)

30/1 1 Mabamba swamps, 31/1 1 between Mabamba swamps and Rwakobo Rock lodge.

HOLUB'S GOLDEN WEAVER (*Ploceus xanthops*)

1/2 1 between Mburo lake and Bwindi.

BROWN-CAPPED WEAVER (*Ploceus insignis*)

3/2 2 Ruhija.

YELLOW-MANTLED WEAVER (*Ploceus tricolor*)

9/2 3 Kibale.

VIEILLOT'S BLACK WEAVER (*Ploceus nigerrimus*)

10/2 15+ Semliki.

RED-BILLED QUELA (*Quela quela*)

30/1 100+ Mburo lake, 6/2 15 Queen Elisabeth National park.

RED-HEADED MALIMBE (*Malimbus rubricollis*)

29/1 2 Mabira forest, 5/2 1 Buhoma, 9/2 2 Kibale, 10/2 2 Semliki.

CRESTED MALIMBE (*Malimbus malimbicus*)

10/2 2 Semliki.

RED-COLLARED WIDOWBIRD (*Euplectes ardens*)

6/2 1 Queen Elisabeth National park.

FAN-TAILED WIDOWBIRD (*Euplectes axillaris*)

30/1 2 between Mabamba swamps and Rwakobo Rock lodge, 1/2 2 Mburo lake.

SOUTHERN RED BISHOP (*Euplectes orix*)

30/1 20+ Mburo lake, 1/2 1 between Mburo and Bwindi.

GREY-HEADED NEGROFINCH (*Nigrita canicapilla*)

28/1 2 Entebbe Botanical garden, 29/1 2 Mabira forest, 4/2 2 Buhoma, 8/2 1 Kibale, 10/2 2 Semliki.

WHITE-BREASTED NEGROFINCH (*Nigritta fusconota*)

29/1 2 Mabira forest, 4/2 2 Buhoma, 8/2 1 Kibale forest.

GREEN-WINGED PYTILA (*Pytilia melba*)

1/2 2 Mburo lake.

DUSKY TWINSPOUT (*Euschistospiza cinereovinacea*)

4/2 2 Buhoma.

RED-HEADED BLUEBILL (*Spermophaga ruficapilla*)

8/2 2 Kibale.

RED-CHEEKED CORDON-BLEU (*Uraeginthus bengalus*)

28/1 2 Entebbe Botanical garden, 30/1 1 Mabamba swamps, 31/1 2 and 1/2 1 Mburo lake, 1/2 1 Bwindi.

RED-BILLED FIREFINCH (*Lagonosticta senegala*)

Quite common species and seen at most visited locations. We counted 80 birds.

AFRICAN FIREFINCH (*Lagonosticta rubericata*)

7/2 4 Queen Elisabeth National park and 2 Lake Edward, 11/2 2 between Semliki and Entebbe.

COMMON WAXBILL (*Estrilda astrild*)

31/1 4 Mburo lake, 4/2 3 Bwindi, 8/2 5 Queen Elisabeth National park, 10/2 5 Semliki.

BLACK-CROWNED WAXBILL (*Estrilda nonnula*)

30/1 1 Rwakobo Rock lodge, 8/2 7 Kibale, 11/2 6 between Semliki and Entebbe.

BLACK-CHINNED QUAIL-FINCH (*Ortygospiza gabonensis*)

6/2 9 and 7/2 2 Queen Elisabeth National park.

BRONZE MANNIKIN (*Lonchura cucullata*)

A common bird around and we counted at least 67+ birds.

BLACK-AND-WHITE MANNIKIN (*Lonchura bicolor*)

28/1 5 Entebbe Botanical garden, 1/2 5+ between Mburo and Bwindi, 8/2 10 Queen Elisabeth National park and 2 Kibale, 11/2 2 between Semliki and Entebbe.

MAGPIE MANNIKIN (*Lonchura fringilloides*)

8/2 2 Kibale.

PIN-TAILED WHYDAH (*Vidua macroura*)

8/2 1 Queen Elisabeth National park, 11/2 1 between Semliki and Entebbe.



BRIMSTONE CANARY (*Serinus sulphuratus*)

8/2 15+ Kibale.

YELLOW-FRONTED CANARY (*Serinus mozambicus*)

30/1 1 Mabamba swamps, 31/1 1 Mburo lake, 2/2 1 Ruhija, 6/2 2 Queen Elisabeth National park, 11/2 2 between Semliki and Entebbe.

STREAKY SEEDEATER (*Serinus striolatus*) 2/2 2 and 3/2 4 Ruhija, 4/2 3 Buhoma.

AFRICAN GOLDEN-BREASTED BUNTING (*Emberiza flaviventris*)

1/2 2 between Mburo lake and Bwindi, 2/2 1 and 4/2 1 Ruhija, 8/2 2 Queen Elisabeth National park.

**Literature**

Kingdon, J., 1997: The Kingdon Field Guide to African Mammals, California.

Sinclair, I. and P. Ryan, 2003: Birds of Africa south of the Sahara, Cape Town.

Stevenson, T. and J. Fanshawe, 2002: Field Guide to the Birds of East Africa, London.



*The Uganda participants 2023 from left: Erik Groth-Andersen, Tina Elley, Birthe Rasmussen, Mads Elley, Erik Vikkelsø Rasmussen, Lars Ejlersen, Steven in front, Christian Glahder behind, Mikkel Leth, Christian Leth and Henrik Thorhauge Rask.*

End of tour.